

Historic, Archive Document

Do not assume content reflects current scientific knowledge, policies, or practices.



WORLD WIDE SOURCES



Gloeckner

FLOWER
SEEDS

1950



There Are No Short Cuts



NATURE tolerates no short cuts and is not to blame for our mistakes. We can only blame ourselves when we do not heed her warnings, as these warnings are plainly written for all those who are wise enough to heed them.

Nature is still the best soil builder. Soil prepared on the farm from green cover crops under Nature's Sun and Rain, conditioned by the North and South winds, has proved to be the most fool proof through the years.

Today, science has shown us the advantages of sterilization, soil analysis, etc. Surely no short cuts here should be attempted. All soil should be sterilized and checked for nutritional levels, as a matter of general practice.

Soil for seed flats should be even more carefully prepared. The short time during which germination takes place is a critical period. An hour of dryness can cause a total crop failure. Ventilation and the prompt uncovering from shade must be done on time.

Sowing on time is vitally important, as a few days difference may mean the difference between profit and loss on any crop.

There are no short cuts! The best results always demand extra attention.

BUSINESS TERMS

2%, 10 DAYS, 60 DAYS NET FOR CUSTOMERS OF APPROVED CREDIT

Prices in this catalog are subject to change without notice. . . . All goods are offered subject to Crop Failures, Shortages or other causes beyond our control, and to being unsold on receipt of order . . . The prices in this catalog are for the trade only. For your own protection do not loan this catalog to anyone not entitled to Florists or Wholesale prices. . . . Unknown correspondents desiring to open an account are requested to furnish three trade references with whom they have had credit relations.

We, Fred C. Gloeckner & Co., give no warranty, expressed or implied, as to the productiveness of any seeds, bulbs or plants we sell and we will not be in any way responsible for the crop. Our liability in all instances is limited to the purchase price.

In addition to seed, *Gloeckner* bulbs, plants and cuttings are selected with diligent care as to type, productiveness and freedom from disease so you may have the best upon which to build your prospective crops.

COVER MAN 1950

Fred G. Foster, born in Toronto, Ont., Canada, in 1878. Began work in the Florist business when but fourteen years of age. Working for several establishments in Toronto and Hamilton until 1909. Coming to this country in that year he worked for Henry A. Dreer at Riverton, N. J. In 1923 he assumed charge of the Henry F. Michell Co. Nurseries at Andalusia, Penna. In 1943 he came to his present position as pot plant grower for Ralston's Flowers, Allentown, Penna.

A lifetime of practical greenhouse experience, and a very genial personality surely places Fred among the tops of the old guard. We appreciate his kindness in posing for our Cover Man 1950.

Gloeckner

15 EAST 26th STREET

"At Madison Square"
NEW YORK 10



Telephone: LExington 2-4197 - 4198
Cable Address: GLOECKNERS, New York

**OUTSTANDING VARIETIES
THAT DESERVE SPECIAL CONSIDERATION**

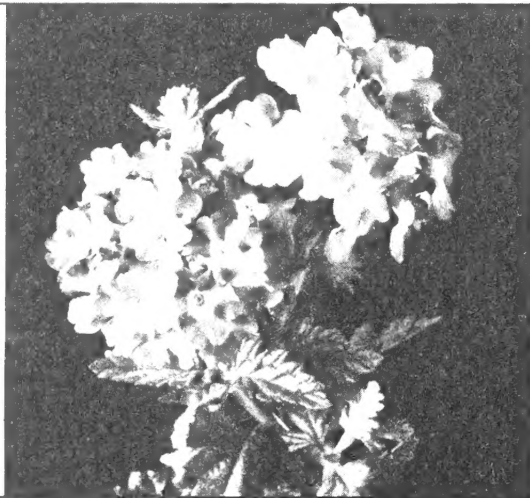
P H L O X

Gloekner STRAIN MIXED

This is an exceptionally dwarf strain of phlox especially adapted to pot culture for spring sales. The mixture of colors is well balanced and bright, with fine individual flower heads.

This strain has been well tried in many localities as we have had it for a number of years in very limited quantities. This is the first time we have had it in sufficient quantity to offer it to the trade.

Tr. Pkt.	1/4 oz.	1/2 oz.	Oz.
\$1.00	\$2.00	\$3.50	\$6.00



PETUNIA FIRE CHIEF

True scarlet red with a velvety texture. The color deepening towards the throat. Plants are dwarf and compact.

Tr. Pkt.	1/32 oz.	1/16 oz.	1/8 oz.
50c	\$1.25	\$2.25	\$3.50



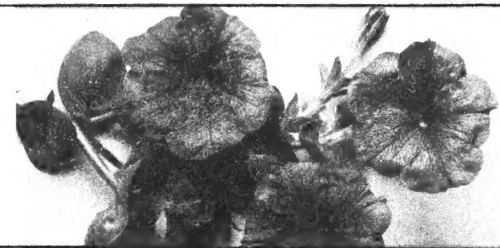
V E R B E N A

Gloekner STRAIN MIXED

Here too, is a fine mixture of dwarf Verbena making a fine companion for the Phlox for spring bedding plant sales. The plants are very dwarf in habit and have a splendid range of colors containing many of the eyed types through the mixture. This is an excellent dwarf Verbena especially adapted to growing in 2 1/4" and 3" pots.

This is the first time we have been able to offer this seed in quantity.

Tr. Pkt.	1/4 oz.	1/2 oz.	Oz.
\$1.00	\$2.00	\$3.50	\$6.00



C I N E R A R I A

Siter's Hybrids

This is an entirely new group of Cineraria hybrids, blending for a perfect color combination from the bright eye types through the finer pastel shades. These new types carry large flower heads with medium, large individual flowers. They are a distinct improvement over the original Siter's Strain, and because they are hybrids, cannot be offered by anyone but the originator.

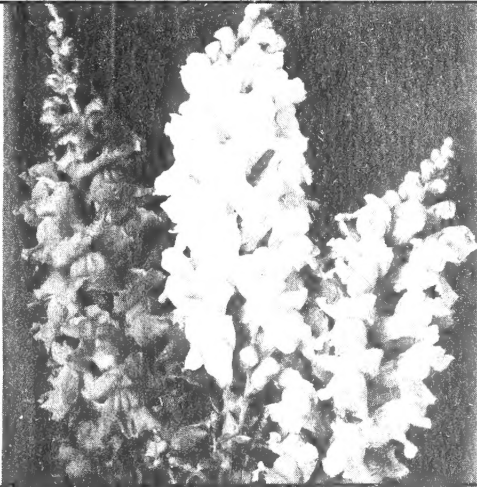
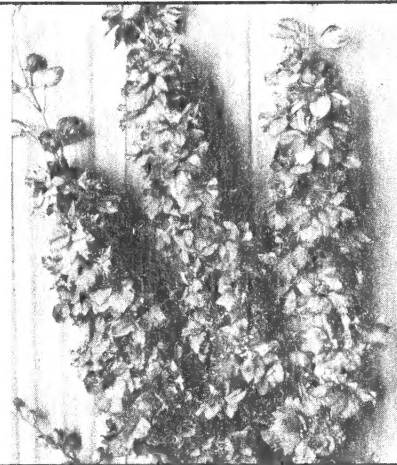
Seed for 1000 plants.....	\$10.00
Seed for 500 plants.....	5.00

OUTSTANDING RECENT INTRODUCTIONS

LARKSPUR REGAL STRAIN

Long spikes of large, well spaced florets distinguishes this strain of Larkspur from all others. It retains the desired height and basal branching habit of Imperialis, but has Delphinium-like florets on long thick spikes.

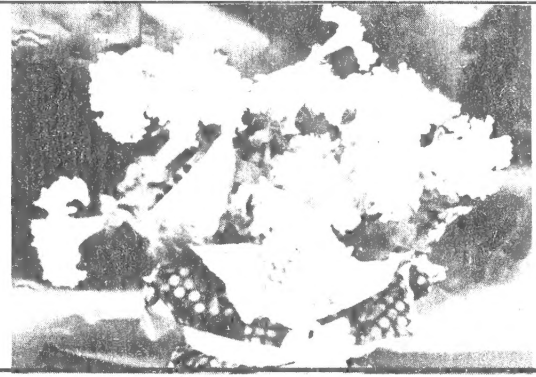
	Tr. Pkt.	1/2 oz.	Oz.
Rose—Rich rose	\$.50	\$1.50	\$2.75
Dark Blue—Deep violet blue.....	.50	1.50	2.75
Pink—Brilliant pink on salmon.....	.50	1.50	2.75
White50	1.50	2.75
Mixed50	1.50	2.75



ANTIRRHINUM TETRA STRAIN MIXED

Antirrhinum Tetra Mixed is one of the most satisfactory outdoor Snapdragons offered to date. Being a Tetra, it is a vigorous grower and the large husky plants sell quickly from flats. Blooming size plants are tall with finger-thickness stems which keep the spikes erect and the tips straight. Flowers are large and mostly ruffled. Colors cover the full range with a majority of flowers richly veined.

Tr. Pkt.	1/4 oz.
\$.50	\$2.50



PETUNIA DWARF FRINGED SINGLE GRANDIFLORA

SNOWHITE — Single pure white with yellow throat. Dwarf fringed, vigorous and free blooming. Good for either pot plants or bedding.

Tr. Pkt.	1/64 oz.	1/32 oz.
\$2.50	\$9.25	\$18.00



PETUNIA DWARF FRINGED SINGLE GRANDIFLORA

TANGO — A Hybrid petunia. Deep rose in color, fringed flowers. Growth dwarf and compact. Good for either pot plants or bedding.

Tr. Pkt.	1/64 oz.
\$2.50	\$9.25

Antirrhinum



ANTIRRHINUM

Winter Snapdragons for Greenhouse Culture

PINK AND ROSE

	Tr. Pkt.
Better Times	\$2.00
Christina—Medium pink	3.00
Christmas Cheer—Shades of pink. Early	3.00
Cheviot Maid Improved—Best deep rose	1.00
Dorcas Jane—Early light pink.....	2.50
Gilbert's Pink Supreme — Beautiful deep pink	1.50
Light Pink Peggy Schumann.....	2.00
Maxine—Rose pink	3.00
Mary Ellen—Early light rose pink.....	2.50
Maryland Pink—Early light pink.....	3.00
Peggy Schumann—Pink	2.00
Rockwood Early Hybrid Pink—Pastel shade of pink.....	2.50
Rockwood Pink Supreme — Brilliant rose pink	2.00
Rose Queen—Deep rose pink.....	1.00
St. Louis Pink—Beautiful flesh pink....	1.50
Yoder's No. 33—Medium pink.....	1.50

WHITE

	Tr. Pkt.
Feist's White	\$2.00
Junglewood White	2.00
Koester's White	1.50
Lucky Strike Improved	1.50
Madeline — White	2.00
Margaret—Ivory white	2.00
Marion White	1.50
Rockwood Early White.....	2.00
Schlegel's Early White Improved.....	1.50
Snowdrift—Double white.....	3.00
Snow Hybrid—Fringed pure white— midseason to late.....	3.00
Westover Fringed White Early (Windmiller)	1.50
Westover Fringed White	1.00
White Wonder	1.50
Yuletide—Early white	2.00

BRONZE AND ORANGE

	Tr. Pkt.
Afterglow—Golden orange	\$1.00
Barbara—Yellowish bronze	3.00
Colorado Peach—Improved afterglow	1.50
Gilbert's Bronze Beauty.....	1.50
Glorious—Reddish bronze	1.00
Lady Dorothy—Copper red	3.00
Schlegel's Early Bronze.....	2.00
Sunglow—Hybrid bronze— midseason	3.00
Witterstaetter's Bronze	2.50

YELLOW

	Tr. Pkt.
Carol Jean—Golden yellow.....	\$2.00
Ethel—Golden yellow	1.50
Frances Schlegel—Yellow	2.00
Gilbert's Yellow	2.00
Gold Mine—Deep golden yellow.....	3.00
Gold Rush—Early golden yellow.....	3.00
Junglewood Yellow—Rich yellow.....	2.00
Rockwood's Canary Yellow.....	1.50
Sara-Lou—Bright yellow	2.00
Schlegel's Early Yellow.....	2.00
Sonny—Yellow	2.00
Witterstaetter's Yellow	2.50

RED

	Tr. Pkt.
Red Lips—Red and white.....	\$2.00
Schumann's Velvet Red.....	3.00
Shisler's Red	2.00

LAVENDER

	Tr. Pkt.
Lavender Rose	\$2.00
Windmiller's Lilac—Excellent orchid color	1.50
Schumann's Lavender	2.00
Witterstaetter's Orchid	2.50

WE CAN SUPPLY YOU WITH ANY VARIETY NOT LISTED ABOVE

Seed should be sown late in June or early July for Winter flowering. High temperature inhibits germination of the seed and one must, therefore, select a cool location for the flats.

Damping off is a serious problem and all precautions should be taken to avoid it. The soil should be sterilized with steam or other efficient measures and after the seed germinates good circulation of air and very little watering will help to prevent this trouble.

ANTIRRHINUM

SNAPDRAGONS

STANDARD OUTDOOR RUST-RESISTANT STRAINS

MAJUS GRANDIFLORUM

	Tr. Pkt.	1/4 oz.	Oz.
Autumn Glow Shades—Old rose suffused amber	\$.35	\$.80	\$2.75
Cherry Rose—A new bright color.....	.50	1.25	5.00
Fiery Red—Very brilliant.....	.35	.80	2.75
Harmony Shades—Terra cotta yellow, shaded rose35	.80	2.75
Orange Shades — Deep to light orange35	.80	2.75
Pinkie—Clear rose35	.80	2.75
Reville—Deep luminous yellow.....	.35	.80	2.75
Rosalie—Rich deep rose; underlying tone of topaz or amber.....	.35	.80	2.75
Salmon Shades—Salmon rose, pink or amber35	.80	2.75
Shasta—Pure white35	.80	2.75
Wallflower Red35	.80	2.75
Yellow Jacket—Deep yellow.....	.35	.80	2.75
University of California Mixture.....	.35	.80	2.75

MAXIMUM GRANDIFLORUM

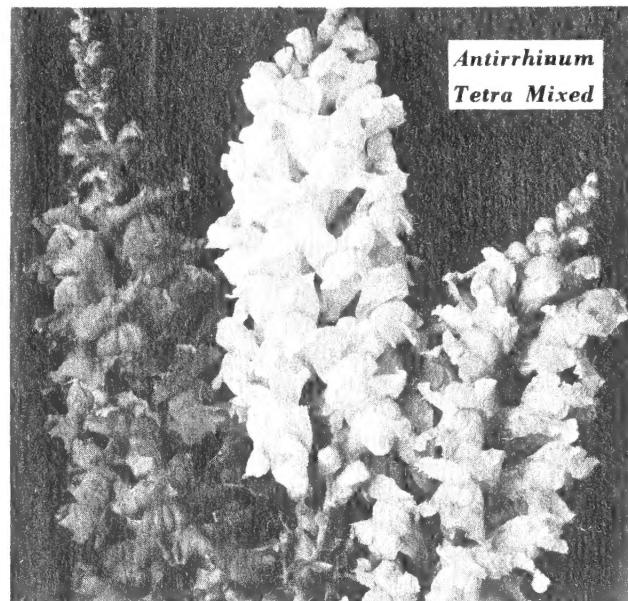
	Tr. Pkt.	1/4 oz.	Oz.
Alaska—(Snowflake)—White	\$.35	\$.85	\$3.00
Canary Bird—Canary yellow35	.85	3.00
Copper Queen — Bronzy copper blending to antique gold at the nose35	.85	3.00
Crimson—Fiery crimson35	.85	3.00
Indian Summer — Coppery orange scarlet35	.85	3.00
Loveliness—Soft rose pink.....	.35	.85	3.00
Salmon Rose Shades.....	.35	.85	3.00
Swing Time—Rose pink.....	.35	.85	3.00
Yellow Giant—Deep yellow.....	.35	.85	3.00
Finest Mixed35	.85	3.00

NANUM GRANDIFLORUM

	Tr. Pkt.	1/4 oz.	Oz.
Amber and Gold—Golden amber, yellow lip	\$.25	\$.85	\$3.00
Carmine Rose—Bright carmine rose25	.85	3.00
Golden Queen—Golden yellow.....	.50	1.50	5.00
Indian Girl—Old gold25	.85	3.00
Saint George — Beautiful shade orange cerise50	1.25	4.00
Red Emperor—Rich deep scarlet....	.50	1.50	5.00
Rose Eclipse—Rose pink.....	.50	1.50	5.00
Royal Rose—Deepest and richest rose imaginable50	1.50	5.00
Wildfire—Bright orange scarlet.....	.25	.85	3.00
Finest Mixed25	.85	3.00

ANTIRRHINUM — Other Strains

Tetra — Mixed — One of the most satisfactory outdoor snaps. Almost never crippled with rust. Blooming size plants are tall with thick stems which keep the spikes erect and the tips straight. Flowers large, mostly ruffled.....	Tr. Pkt.	1/4 oz.	
	\$.50	\$2.50	



AGATHEA — (Blue Daisy)

	Tr. Pkt.	Oz.
Coelestis — The lovely, free flowering blue Marguerite	\$.25	\$1.85

AGERATUM

	Tr. Pkt.	1/4 oz.	Oz.
Blue Ball Improved — Dwarf and compact. Uniform rich blue color.....	\$.35	\$1.25	\$4.00
Blue Cap—Rich blue, very compact.....	.30	1.00	3.50
Blue Perfection—Dark blue.....	.20	.50	1.50
Little Blue Star—3 inches high, fine for bedding25	1.00	3.50
Midget Blue—Very dwarf with delicate fine foliage; blue flowers.....	.40	1.75	5.50

AMARANTHUS

	Tr. Pkt.	Oz.
Molten Fire—Leaves are of iridescent crimson.....	\$.20	\$1.25
Tri-Color Splendens—(St. Joseph's Coat) Yellow, red and green foliage—3 ft.....	.15	1.00

ALYSSUM

We can highly recommend these strains of Alyssum. Of special merit is our selected strain of "Bouquet" which is considered one of the most dependable on the market.

	Tr. Pkt.	Oz.	1/4 lb.
Bouquet—(Carpet of Snow—Procumbens) best dwarf variety.....	\$.15	\$.75	\$2.25
Little Gem—Dwarf and compact.....	.20	.90	2.75
Sweet—(Maritimum) Trailing15	.40	
Snow Cloth—Plants are flat and a compact mass of pure white flowers.....	.25	.75	
Violet Queen—Dwarf compact, rich deep shades of violet.....	.25	1.25	4.25

ANEMONE CORONARIA

	Tr. Pkt.
Blue Poppy—Bright blue.....	\$.50
De Caen—Fine mixed50
His Excellency—Single fiery scarlet.....	.50

ASPARAGUS

New Crop Seed Ready in Mid February

	1000 Seeds	5000 Seeds
Plumosus Nanus	\$2.00	\$9.00
Sprengeri	2.00	9.00

ASTERS

BODGER'S WILT RESISTANT STRAINS

QUEEN OF THE MARKET

These well-known early flowering Asters are of branching habit, about 20" tall, blooming mid-July.

	Tr. Pkt.	1/4 oz.	Oz.
Azure Blue	\$.40	\$.60	\$1.85
Ballet Queen—Deep salmon rose.....	.40	.75	2.00
Crimson40	.60	1.85
Dark Blue or Purple.....	.40	.60	1.85
Light Blue or Lavender.....	.40	.60	1.85
Peach Blossom—Flesh pink.....	.40	.60	1.85
Rose40	.60	1.85
White40	.60	1.85
Finest Mixed40	.60	1.85

EARLY ROYAL BRANCHING

Plants branching, 1 1/2 - 2 feet, blooming mid-August, directly following the Queen of the Market.

	Tr. Pkt.	1/4 oz.	Oz.
Azure Blue or Dark Lavender.....	\$.40	\$.60	\$1.85
Deep Rose40	.60	1.85
Peach Blossom—Lavender pink.....	.40	.60	1.85
Purple40	.60	1.85
Shell Pink40	.60	1.85
White40	.60	1.85
Finest Mixed40	.60	1.85

AMERICAN BEAUTY

Blooms from August and continues until frost. The large and double flowers are produced on long heavy stems; plants 2 to 3 feet high.

	Tr. Pkt.	1/4 oz.	Oz.
Azure Fairy—Dark lavender.....	\$.40	\$.60	\$1.85
Crimson40	.60	1.85
Deep Rose40	.60	1.85
Purple40	.60	1.85
September Beauty—Shell pink.....	.40	.60	1.85
Silvery Rose40	.60	1.85
White40	.60	1.85
Finest Mixed40	.60	1.85

IMPROVED CREGO

Plants robust, branching about 2 1/2 feet tall, flowers large, double and well formed, one of the finest varieties for all purposes. Blooming mid-August.

	Tr. Pkt.	1/4 oz.	Oz.
Azure Blue	\$.40	\$.60	\$1.85
Blue Flame—Rich blue40	.60	1.85
Crimson40	.60	1.85
Deep Rose40	.60	1.85
Light Blue—Lavender40	.60	1.85
Peach Blossom40	.60	1.85
Shell Pink40	.60	1.85
Purple or Dark Blue.....	.40	.60	1.85
White40	.60	1.85
Finest Mixed40	.60	1.85

AMERICAN BRANCHING (Semple's)

Plants 2 1/2 to 3 feet tall, branching, robust, flowers large, double and fine form. Flowers late August and early September.

	Tr. Pkt.	1/4 oz.	Oz.
Azure Blue or Dark Lavender.....	\$.40	\$.60	\$1.85
Crimson40	.60	1.85
Peach Blossom40	.60	1.85
Purple40	.60	1.85
Rose40	.60	1.85
Shell Pink—(Mary Semple).....	.40	.60	1.85
White—Extra select, long stems.....	.40	.60	1.85
Finest Mixed40	.60	1.85



ASTERS—(Continued)

EARLY GIANT

Flowers are of the large Giant of California type, while the plants are shorter, about 1½ feet in height. This class is early blooming, coming into flower by the first week in September.

	Tr. Pkt.	¼ oz.	Oz.
Light Blue	\$.50	\$.80	\$2.75
Peach Blossom50	.80	2.75
Rose Marie—Rich rose.....	.50	.80	2.75
Mixed50	.80	2.75

PRINCESS TYPE (Wilt Resistant)

A very attractive new cutting type of wilt resistant Aster, 2 - 2½ feet tall, branching and free flowering, early blooming, bearing quantities of flowers on strong stems. Blooms mid-August.

	Tr. Pkt.	¼ oz.	Oz.
Anne—Peach blossom.....	\$.50	\$.85	\$2.75
Barbara—Orchid50	.85	2.75
Bonnie—Soft salmon rose.....	.50	.85	2.75
Golden Sheaf—Yellow50	.85	2.75
Linda—Clear rose50	.85	2.75
Marsha—Rich cinnabar scarlet.....	.50	.85	2.75
Mixed50	.85	2.75

SINGLE CHINENSIS (Wilt Resistant)

Plant 1½ to 2 feet tall, flowers daisylike, petals wide and closely placed, blooms in late August.

	Tr. Pkt.	¼ oz.	Oz.
Branching Single Rainbow Mixed.....	\$.25	\$.45	1.65
Upright Single Rainbow Mixed.....	.25	.45	1.65

SUPER GIANT (Non-Resistant)

This is the largest and most fully double Aster class known. Plants about 2½ feet tall.

	Tr. Pkt.	¼ oz.	Oz.
El Monte—Crimson	\$.40	\$.85	\$3.00
Los Angeles—Shell pink.....	.40	.85	3.00

TILFORD'S STRAIN

	Tr. Pkt.
Deep Rose	\$1.00
Purple	1.00
Shell Pink	1.00
White	1.00

VARIOUS RESISTANT VARIETIES

	Tr. Pkt.	¼ oz.	Oz.
Ball White Early — White crested center, branching 2 to 2½ feet. Early September	\$.40	\$.60	\$1.85
Ball White Late — White 2½ to 3 feet long stems. Mid to Late September40	.60	1.85
Ball Deep Rose—Bright deep rose, 2½ to 3 feet branching. Late August40	.60	1.85

	Tr. Pkt.	¼ oz.	Oz.
Ball Purple — Deep bright purple, 2½ to 3 feet branching. Late August	\$.40	\$.60	\$1.85
Early Phlox Pink — Clear light rose pink, 2½ to 3 feet. Late August.....	.40	.60	1.85
Heart of France — Bright red. Late August40	.65	2.00

BEGONIA

	Tr. Pkt.	1/64 oz.	1/32 oz.
Adeline—Dwarf bright pink.....	\$1.00	\$2.50	\$4.50
Carmen—Compact well formed variety with greenish bronze foliage and clear rose pink flowers	1.00	2.25	4.00
Christmas Cheer—Medium dwarf crimson scarlet.....	1.00	2.00	3.50
Ile de France — A large pure white with light green foliage. Growth fairly strong.....	1.00	2.00	3.50
Indian Maid — Deep bronze, shiny leaf with red flowers.....	1.00	2.50	4.50
King of the Reds—Red flowers with green foliage. The dwarf habit of this begonia makes it suitable for pot plants or the border	1.00	2.50	4.50

	Tr. Pkt.	1/64 oz.	1/32 oz.
Luminosa—Red	\$1.00	\$3.50	\$5.50
Luminosa Compacta—Dwarf red	1.00	3.00	5.50
Pink Pearl	1.00		
Prima Donna—Carmine	1.00	2.00	3.50
Masterpiece—Clear rose pink.....	1.00	2.25	4.00
Red Pearl	1.00		
Salmon Queen—Large flowered salmon	1.00	2.25	4.00
White Lady—White	1.00	2.25	4.00
White Pearl—White	1.00	2.50	4.50
Scandinavia — Free flowering. Bright rose pink.....	1.00	2.75	5.00
Tuberous Rooted Mixed — Camelia flowered double type.....	2.50		

Soil to be used for seed flats should have two parts leaf mold, two parts well rotted manure, two parts soil and one part sand. Steam sterilize the flats and soil about one week before sowing, also water the soil well before sowing. For four inch plants for Spring sale sow seed in August. If 2¼ inch plants are wanted for Memorial Day, sow seeds in December. Many growers make monthly sowings from August to March.

For potting soil use the same mixture as above but add more soil and a three inch pot of Electra or complete fertilizer, to 2½ bushels of soil.

Begonia seed will germinate better in a temperature of 60-70° F. Grow Begonias in 55° temperature. Mite, Nematode and Aphis are sometimes troublesome.

CALENDULA

August sowing will flower from December to February. Early October sowing to follow Chrysanthemums, will bloom in February and March, while January sowing will bloom in April and May.

	Tr. Pkt.	1/4 oz.	Oz.	1/4 lb.
Ball's Gold —Long stemmed, large, deep golden yellow.....	\$.40	\$.60	\$2.00	\$6.50
Ball Long Orange Improved —Bright orange with light eye. The extra large flowers and long stems make an outstanding variety.....	.40	.60	2.00	6.50
Ball Orange —Glowing orange.....	.40	.60	2.00	6.50
Ball Supreme —Orange with dark brown center; unusually free flowering.....	.40	.60	2.00	6.50
Lemon Queen —Deep lemon yellow with dark brown eye. Contrasting colors make this yellow variety very effective.....	.40	.60	2.00	6.50
Masterpiece —Long stemmed, clear orange flower with dark center.....	.40	.60	2.00	6.50
Orange King —Dwarf bedding variety deep orange with dark eye.....	.15	.35	1.00	
Sensation or Campfire Improved —Brilliant orange scarlet sheen.....	.40	.60	2.00	6.50

CALCEOLARIA

The soil used in germinating the seeds should be made up of two parts leaf mold, two parts well rotted manure, two parts soil, and one part sand. Sterilize the soil and flat with steam to eradicate all disease.

Sow the seeds lightly over the surface and cover the flat with a suitable covering. Calceolaria will germinate better when the temperature is cool, therefore, well shaded locations are better. August sowing will make large plants for May while November sowing will make good four inch plants. Some growers have used the wick irrigation method to germinate the seed with very good results.

GILBERT'S STRAINS

This is an improvement over the original Multiflora Nana type. Compact habit of growth; good selection of colors in the mixture; excellent foliage.

	Tr. Pkt.
Multiflora Nana Red	\$1.00
Multiflora Nana Yellow	1.00
Multiflora Nana Mixed	1.00
Triumph Strain (Grandiflora) —Large flowered strain, the best in its class.....	1.00

REGULAR STRAIN

	Tr. Pkt.	1/64 oz.	1/32 oz.
Multiflora Nana Mixed —Dwarf growth with large compact heads of medium sized flowers. This fine strain contains a good range of colors.....	\$1.00	\$4.25	\$8.00

CANDYTUFT

	Tr. Pkt.	Oz.	1/4 lb.	Lb.
Giant Hyacinth Flowered				
White	\$.20	\$.80	\$2.75	\$8.50

UMBELLATA

	Tr. Pkt.	Oz.	1/4 lb.
Crimson —Purplish red.....	\$.15	\$.50	\$1.65
Flesh —Flesh pink.....	.15	.50	1.65
Lavender or Lilac15	.50	1.65
Rose Cardinal —Deep red.....	.15	.50	1.65
Rose —Soft rose.....	.15	.50	1.65
White15	.50	1.65

CALLIOPSIS DWARF

This annual is very free flowering and recommended for bedding. If continued flowering is wanted old flowers must be removed.

	Tr. Pkt.	Oz.
Golden Wave —Golden yellow with red zone.....	\$.15	\$.50
Dwarf Varieties Mixed15	.50

CHRYSANTHEMUMS (Annual)

Another group which is finding favor with florists for cut flower material. Chrysanthemums last remarkably well as a cut flower, but for best results keep them in water 24 hours before marketing. Sow in mid August to follow early Chrysanthemums. Responds very well to additional light.

	Tr. Pkt.	Oz.
Mixed	\$.15	\$.60

CARNATION (Enfant de Nice)

One of the best annual Carnations. Plants are strong, robust growers bearing flowers 2 1/2 to 3 inches in diameter on good stiff stems. Do not expect over 75% to come true to color or better than 90% double flowers.

	Tr. Pkt.	1/8 oz.
White	\$.50	\$2.00
Salmon50	2.00
Rose50	2.00
Red50	2.00
Spectrum Red —Intense scarlet.....	.50	2.00
Yellow50	2.00
Mixed50	2.00

CLARKIA (Elegans Double)

For spring flowering sow in early January and grow in shallow soil in flats or benches. Keep plants on the dry side as vigorous growth is not wanted.

	Tr. Pkt.	Oz.
Mixed	\$.20	\$1.25

COLEUS

	Pt. Pkt.
Large Leaved Hybrids Mixed —An excellent strain containing a mixture of brilliant colors.....	\$1.00
Glory of Vichy —Small leaved.....	.75

CYNOGLOSSUM

	Tr. Pkt.	Oz.
Firmament —Intense clear blue.....	\$.20	\$1.25

CINERARIA

Positively do not use soil that was previously used for Mums and especially so if your Mums were affected with Verticillium wilt or Seidewitz disease. CINERARIAS are attacked by this wilt which is a soil borne fungus. It will cause the lower leaves to wilt and die and then gradually kill the entire plant. The only prevention for this trouble is to use new field soil from seed flats to finished pot. If you do use old chrysanthemum soil be sure to sterilize it. To be on the safe side it is recommended to steam sterilize soil before using.

Siter's Hybrids

They are a distinct improvement over the original Siter's Strain, and because they are Hybrids from individual crosses, cannot be offered by anyone but the originator.

This is an entirely new group of Cineraria Hybrids, blended for a perfect combination of colors, ranging from bright-eyed types through the finer pastel shades.

These new types carry large flower heads with medium, large individual flowers.

Seed for 1000 plants.....	\$10.00
Seed for 500 plants.....	5.00

CREMER'S PRIZE STRAIN

This strain has been greatly improved by the originator — has small foliage that is wilt-proof with tremendous heads of flowers of the brightest colors.

Tr. Pkt. \$1.50	1/32 oz. \$4.00	1/16 oz. \$7.50
-----------------	-----------------	-----------------

CENTAUREA

Listed below are the finest improved Florist strains of Centaurea Cyanus. The flowers are large, fully double and the colors intensified. The extra long stems of this strain make them excellent for cut flower purposes.

CYANUS

	Tr. Pkt.	Oz.	1/4 lb.	Lb.
Blue Boy — Excellent for forcing	\$.15	\$.45	\$ 1.50	\$ 5.00
Pinkie—Deep pink15	.45	1.50	5.00
Red Boy—Deep red.....	.15	.45	1.50	5.00
Snowman—Clear white15	.45	1.50	5.00

IMPERIALIS

	Tr. Pkt.	Oz.
Brilliant Rose	\$.20	\$.90
Deep Lavender20	.90
Delicate Lilac20	.90
Suaveolens (Yellow Sweet Sultan) — Large bright yellow flowers, popular for cutting... ..	.15	.85
Yellow20	.90

AMERICANA

	Tr. Pkt.	1/4 oz.	Oz.
Lilac — Thistle-like blooms of rosy-lavender color. Splendid for cutting	\$.15	\$.25	\$.75
White—White form of the above.....	.15	.25	.75

DUSTY MILLERS

	Tr. Pkt.	1/4 oz.	Oz.
Candidissima—(Dusty Miller) Silvery gray foliage	\$.45	\$ 1.00	\$ 3.50
Gymnocarpa — (Dusty Miller) Fine silvery foliage20		.75

CELOSIA

PLUMOSA

	Tr. Pkt.	1/4 oz.	Oz.
Fiery Feather—Similar to Flame of Fire, but taller and with somewhat smaller plumes more freely produced	\$.40	\$ 1.25	\$ 4.00
Flame of Fire—Fine dwarf type fiery red50	1.50	
Golden Feather — Habit same as Fiery Feather, but with golden yellow plumes40	1.25	4.00
Golden Plume—4 ft. golden yellow, for cutting30	.60	2.00
Pride of Castle Gould—Deep crimson to light yellow.....	.20	.55	2.00
Thompsonni Magnifica Finest Mixed — Excellent strain.....	.35	.60	2.25
Scarlet Plume—4 ft. scarlet.....	.30	.60	2.00

CRISTATA

	Tr. Pkt.	1/4 oz.	Oz.
Dwarf Golden Yellow.....	\$.30	\$.60	\$ 2.25
Dwarf Empress—Deep scarlet bronzy green foliage30	.60	2.25
Gilbert's Maple Gold—Beautiful combs varying in color from light to dark pink tipped with Gold. Grows 2 to 3 feet high.			

Originators Tr. Pkt. (300 seeds)..... \$.50

COSMOS

SENSATION

	Tr. Pkt.	Oz.
Pinkie—Delightful rose pink.....	\$.25	\$ 1.15
Purity—Glistening white25	1.15
Crimson—Deep red selection of Sensation.....	.30	1.75
Radiance—Deep rose with band of rich crimson50	2.50
Mixed25	1.15

DELPHINIUM

VETTERLE AND REINELT PACIFIC STRAIN

This is the finest strain of Delphinium yet introduced. From our personal observations in the field, we find this has unquestionably proven to be the leader in Delphiniums of the better type. The flowers are immense in size, well set on strong, straight stems, do not shatter, and are 40 to 90% mildew resistant. July or August sowing and transplanting into the field during the fall will produce an early crop with large spikes. Delphiniums require a well drained soil, neutral in reaction. January sowing will produce flowers during the summer.

BLACK KNIGHT

The individual florets, 2 to 3" in diameter, are **Dark Purple**, beautifully rounded form with heavy velvety texture. Very large well formed spikes.

BLUE BIRD SERIES

This series can be recommended as being the **clearest medium blues with white bees**. They carry well formed round flowers 2 1/4 inches in diameter on very long, graceful spikes.

BLUEJAY SERIES

Color striking. **Clear medium to dark blue**. Very intense and alive with contrasting bee.

CAMELIARD SERIES

A **pure lavender self**, with **white bee**, individual flowers, are very round and flat. Excellent growing habits.

GALAHAD SERIES

Flowers **Clear White**, averaging three inches in diameter, pyramidal spikes, good branching habit, strong whippy stems with a high percentage of mildew resistance.

GUINEVERE SERIES

Light Pink Lavender self with **white bee**. Individual florets 2 1/2 to 3 inches in diameter. For cut flowers and show purposes. Mildew resistance — 50 to 70%.

KING ARTHUR SERIES

Brilliant Royal Violet with **large white bee**. Individual florets 2 1/2 inches in diameter. Excellent for cut flowers. Mildew resistance from 80 to 90%.

LANCELOT SERIES

Clear Lilac self with **white bee**.

PERCIVAL SERIES

A companion to the Galahad Series. Large **glistening white** flowers with strongly contrasting **black bee**.

ROUND TABLE SERIES

This represents **all the color combinations of the Knights and their Ladies** which will eventually be introduced. Some three hundred different crosses were used to make up this group.

SUMMER SKIES SERIES

Clearest Light Blue with **white bee**. Individual florets 2 to 2 1/2 inches in diameter. Ideal for cut flower purposes. Mildew resistance — 40 to 60%.

ALL COLORS MIXED

A blend containing all named colors mentioned above.

Prices for all of the above varieties:

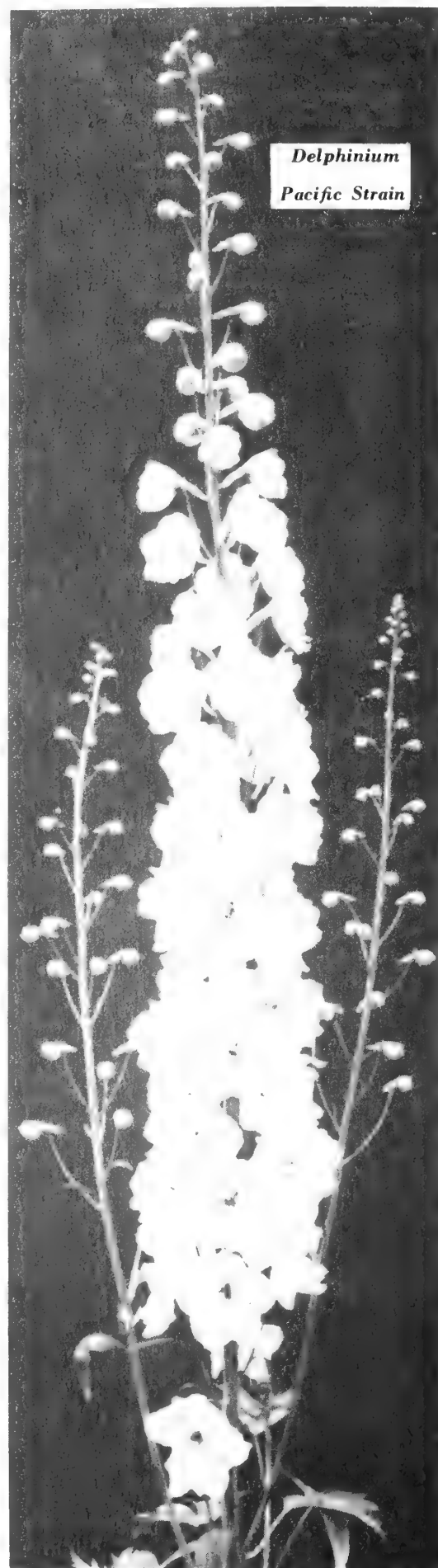
Tr. Pkt.	1/4 Oz.	Oz.
\$1.25	\$4.00	\$14.00

DELPHINIUM — OTHER STRAINS

	Tr. Pkt.	Oz.
Blackmore & Langdon Strains.....	\$.50	\$3.00
Cliveden Beauty (Improved Belladonna)—Selected strain, Turquoise blue40	3.00
Bellamosum—Dark blue. Belladonna habit of growth.....	.40	3.00
Gold Medal Hybrids—Large flowering. Tall.....	.25	1.75
Lamartine—Fairly deep bright marine blue. Excellent cut flower habit50	4.75
Wrexham Hybrids—Blending of light and dark shades.....	.50	5.50

CHINENSIS TALL FLORIST STRAINS

	Tr. Pkt.	Oz.
Alba—Pure white	\$.25	\$1.50
Cambridge Blue—Azure blue.....	.35	2.75
Liberty—Dark blue25	1.50



Delphinium
Pacific Strain

CYCLAMEN SEED

DAUERNHEIM STRAIN

This strain is compact, free flowering and matures early. Tests have shown that it is more disease resistant and will do very well under conditions here in the States. The foliage is of medium size, the blooms well proportioned are particularly large, the white and white with eye often measuring six inches across.

Dauernheim's have selected and improved this strain for a number of years and in their trials have found this strain to be superior.

	Per 100	Per 1000
Dark red	\$3.50	\$28.00
Pure white	3.50	28.00
Salmon	3.50	28.00
White with eye.....	3.50	28.00

BURGHARDT STRAIN

	Per 100	Per 1000
Bonfire or America—Fiery salmon.....	\$2.30	\$21.00
Bright Red	1.75	16.00
Dark Blood Red	1.75	16.00
Glory of Wandsbeck or Perle of Zehlendorf —Dark salmon	2.25	20.00
Orange Beauty—Orange vermillion.....	2.30	21.00
Pink Pearl	2.30	21.00
Pure Rose	1.75	16.00
Pure White	1.75	16.00
Rose of Marienthal—Soft rose carmine eye	1.75	16.00
Rose of Zehlendorf—Light salmon.....	2.25	20.00
Salmon Rose Imp.	2.25	20.00
Salmon Scarlet	2.30	21.00
White with Carmine Eye.....	1.75	16.00

DAHLIAS

These are easy to raise from seed and are overlooked by many florists. Vast improvements have been made in these strains which come remarkably true to type and height. They are early flowering, blooming profusely the same year they are sown.

For small pot plant sales in the spring the seed should be started during January or February. To produce four inch pot plants for Mothers' Day sow the seed in November.

	Tr. Pkt.	Oz.
Unwin's Dwarf Ideal Bedding Mixed—Early flowering semi-double, 18 inches, in a wide range of colors.....	\$.50	\$2.50
Coltness Hybrids—Dwarf single type, very free flowering, height 2 feet, choice mixed colors50	1.50
Vosberg Hybrids —New and exceptionally fine type50	2.50

DIDISCUS

Responds to Additional Light

	Tr. Pkt.	Oz.
Coerulea—(Blue Laceflower)	\$.25	\$1.00

DIANTHUS HEDDEWIGII LACINATUS

	Tr. Pkt.	Oz.
Gaiety—Single flowers in a wide range of gay and brilliant colors. The deeply cut petals give the flowers a lacy appearance	\$.35	\$2.50

Gloekner STRAIN

This strain is produced by one of the foremost Cyclamen specialists in Europe and is considered outstanding.

We feel that the new colors offered in this strain are vitally necessary if renewed interest is to be aroused in the production and use of Cyclamen.

An asterisk has been placed before the colors which are considered the best of the newer shades. The standard shades are also included and are considered exceptional.

	100 Seeds	1000 Seeds
*1. Bright Red	\$1.75	\$16.00
2. Light Pink	1.75	16.00
3. Rose of Marienthal—Pink with dark eye	1.75	16.00
4. Lilac	1.75	16.00
5. White with Dark Eye.....	1.75	16.00
* 6. Pure White	1.75	16.00
7. Glory of Wandsbek or Perle of Zehlendorf—Dark salmon	2.20	18.00
8. Rose of Zehlendorf—Light salmon.....	2.20	18.00
9. Dark Red with Salmon Sheen.....	2.25	20.00
10. Aurora—Salmon with ivory sheen.....	2.25	20.00
11. Fringed Mixed	2.25	20.00
12. Bonfire	2.25	20.00
*13. Dark Pink with Strong Silver Sheen....	2.25	20.00
*14. Lilac Color with Salmon Sheen.....	2.25	20.00
*15. Salmon Pink with White Rim.....	2.25	20.00
*16. Pink with Dark Shaded Oblong Stripes	2.25	20.00
17. America	2.25	20.00
*18. Fringed with Red Selvage and Dark Eye	2.25	20.00
19. Saffron—Red with salmon sheen.....	2.25	20.00
*20. Exquisite—Salmon pink with white rim	2.25	20.00
21. Golden Rose	2.25	20.00
*22. Peach—Purest peach blossom color....	2.25	20.00
*23. Cattylea—Pale lavender lilac blue.....	2.25	20.00
*24. Sunset—Beautiful strong orange.....	2.25	20.00

DIMORPHOTHECA (African Daisy)

	Tr. Pkt.	Oz.
Aurantiaca—Golden orange. Splendid for cutting; well adapted for forcing.....	\$.25	\$1.00
Aurantiaca Hybrid Mixed.....	.25	1.00

DRACAENA

	Tr. Pkt.	Oz.
Australis—Broad leaved variety	Tr. Pkt.	Oz.
1/4 lb. \$3.50	\$.20	\$1.00
Indivisa—Narrow green leaves. The popular kind for bedding or vases—lb. \$5.00.....	1/4 lb.	1.50 .15 .50

EUPHORBIA

	Tr. Pkt.	Oz.
Variegata—(Snow on the Mountain).....	\$.15	\$.50

FEVERFEW (Matricaria)

	Tr. Pkt.	Oz.
Double White—Excellent for cut flowers	Tr. Pkt.	Oz.
1/4 oz. \$2.00	\$.50	

PAGE 12

GAILLARDIA PICTA

	Tr. Pkt.	Oz.
Indian Chief—Single bronzy red.....	\$.15	\$1.00
Double Lorenziana—Finest mixed.....	.15	1.00
Single Mixed15	1.00

GLOXINIA

	Tr. Pkt.	Oz.
From the time the seed is sown six months is required to mature this plant.		
Mixed—This mixture consists of the most desirable Florist strains of the flexible leaf type		\$1.00

GOMPHRENA (Globe Amaranth)

	Tr. Pkt.	Oz.
An attractive everlasting garden flower with some value for cutting.		
Rubra—Bright deep shade of magenta purple.....	\$.15	\$1.00
Aurea Superba—Color light orange-red. Flower heads 3/4" in diameter on plants 18" tall. Habit very uniform.....	.25	1.25

GREVILLEA (Silk Oak)

March sowing will make a good sized specimen by fall, June sowing will make 2 1/4 inch pot plants ideal for use in panning poinsettias.	Tr. Pkt.	Oz.
Robusta—A splendid foliage plant.....	\$.25	\$1.75

GYPSOPHILA (Baby's Breath)

(Annual)

Free blooming plants of easiest culture. Desirable for cutting to mix with other flowers.

	Oz.	1/4 lb.	Lb.
Convent Garden Strain—Pure white.....	\$.25	\$.75	\$2.25
London Market Improved.....	.25	.75	2.25

HELIANTHUS (Double Sunflower)

	Tr. Pkt.	Oz.
Sun Gold—Brilliant golden yellow, large double flowers, free flowering. 100% double; 4 to 5 feet tall. Fine for large basket work. Well worth a trial.....	\$.20	\$1.00

HELICHRYSUM MONSTROSUM

	Tr. Pkt.	Oz.
Mixed	\$.15	\$1.00

IPOMEA

	Tr. Pkt.	Oz.
Clark's Mammoth Blue—(Heavenly blue improved)—plant in a dry sandy location and never apply fertilizer..... 1/4 lb., \$2.00	\$.25	\$.75
Pearly Gates—Lovely lustrous white with creamy shading deep down in the throat35	1.50
Scarlett O'Hara—Rich dark wine red or deep rosy crimson.....	.25	1.00
Noctiflora—(Moonflower)—Flowers at night	1/4 lb., \$1.35	.15 .40

GIANT KING

LUPINUS (Annual)

An improved strain 3 to 4 ft. tall. King Lupinus have the base branching habit, with four to six long spikes to the plant.

	Tr. Pkt.	Oz.	1/4 lb.
Sky Blue—Light blue.....	\$.20	\$.85	\$2.75
Heliotrope—Rosy purple20	.85	2.75
Blue—Oxford blue20	.85	2.75
White—Pure white20	.85	2.75
Mixed20	.85	2.75

HARTWEGII

	Tr. Pkt.	Oz.	1/4 lb.
Sky Blue	\$.20	\$.85	\$2.75
Rich Blue20	.85	2.75
White20	.85	2.75
Pink20	.85	2.75

KALANCHOE

For Christmas flowering shade the plants with black cloth from September 1st to October 10th, from 5 P.M. to 8 A.M. each day and grow in a 60 degree house.

	Tr. Pkt.	1/64 oz.
Tom Thumb—A dwarf strain of Blossfeldiana. Ideal for pot plants. For best results sow seeds in January..... 1/32 oz., \$9.00	\$2.50	\$5.00
Blossfeldiana60	1.75

KOCHIA

(Summer Cypress or Mexican Fire Bush)

	Tr. Pkt.	Oz.
Childsi—Improved strain	\$.10	\$.25

LINARIA

Excellent for combination work. Resembles a miniature snapdragon. When sown in January will make good material for combination pots for Mothers' Day.

	Tr. Pkt.	Oz.
Fairy Bouquet—Pastel shades; compact growing.....	\$.20	\$1.50

LOBELIA

Sow Early to Get Best Results

	Tr. Pkt.	Oz.
Blue Stone—Dwarf bright blue, compact habit.....	\$.35	\$3.00
Crystal Palace Compacta—Dwarf, dark blue; dark foliage.....	.35	3.00
Mrs. Clibran Imp.—Dwarf blue, white eye.....	.35	3.00
Sapphire—Deep blue, white eye, trailing.....	.40	3.50



HUNNEMANNIA (Mexican Tulip Poppy)

	Tr. Pkt.	Oz.
Sunlite—Semi double brilliant canary yellow... \$.25	\$.25	\$1.75

LARKSPUR

REGAL STRAIN

Long spikes of well placed florets distinguishes this new strain from all others. It keeps the desirable height and basal branching habits of the Giant Imperials.

	Tr. Pkt.	1/2 oz.	Oz.
Rose—Rich rose	\$.50	\$1.50	\$2.75
Dark Blue—Deep violet blue.....	.50	1.50	2.75
Pink—Brilliant pink on salmon.....	.50	1.50	2.75
White50	1.50	2.75
Mixed50	1.50	2.75

SUPREME STRAIN

A new strain of the popular Giant Imperial or Base Branching Type of Larkspur. Plants have an upright habit of large center or main flower spikes, which are formed by a great many fully double, large flowers with broad petals closely and well spaced on the stem.

	Tr. Pkt.	Oz.
Dark Blue Supreme—Rich violet purple.....	\$.40	\$1.50
Lilac Supreme—Clear lilac.....	.40	1.50
Pink Supreme—Clear rose pink, deeper in color than Pink King and Los Angeles Improved40	1.50
Rose Supreme—Clear, pure deep rose.....	.40	1.50
Salmon Supreme—A true shade of real salmon.....	.40	1.50
White Supreme40	1.50
Supreme Mixture40	1.50

GIANT IMPERIAL OR BASE BRANCHING

	Tr. Pkt.	Oz.	Lb.
Blue Bell—Azure blue.....	\$.25	\$1.10	\$11.00
Blue Spire—Very deep violet blue.....	.25	1.10	11.00
Brilliant Rose (New)—Deep salmon rose suffused brilliant carmine.....	.25	1.10	11.00
Carmine King—Deep carmine rose.....	.25	1.10	11.00
Coral King—Coral pink white shaded.....	.25	1.10	11.00
Dazzler—Rich scarlet25	1.10	11.00
Exquisite Pink Improved—Soft pink shaded salmon.....	.25	1.10	11.00
Gloria Improved—Deep salmon rose.....	.25	1.10	11.00
Lilac King—Rich lilac, fully double closely spaced florets.....	.25	1.10	11.00
Lilac Spire25	1.10	11.00
Los Angeles Improved—Brilliant pink on salmon.....	.25	1.10	11.00
Miss California—Deep rose on salmon.....	.25	1.10	11.00
Pink Perfection—Beautiful shade of lively light salmon pink.....	.25	1.10	11.00
Pink King—Soft shade of salmon rose.....	.25	1.10	11.00
Rosalind—Salmon pink25	1.10	11.00
Sweet Lavender—Lavender color25	1.10	11.00
White King—Glistening white, huge flowers.....	.25	1.10	11.00
White Spire—Pure white, early.....	.25	1.10	11.00
Mixed—Named colors25	1.10	11.00

TALL DOUBLE STOCK FLOWERED

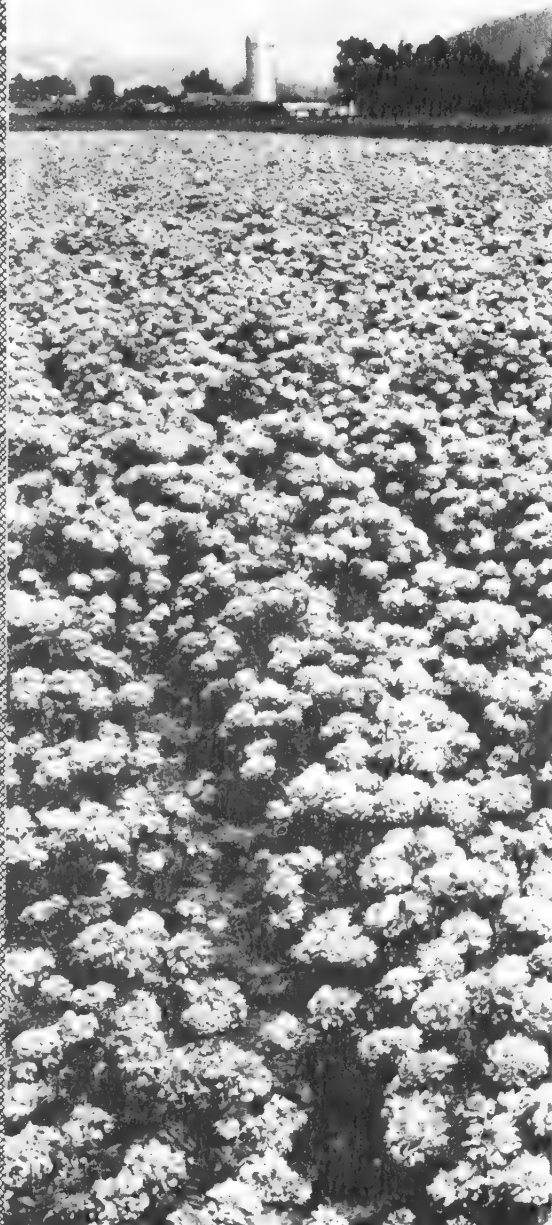
	Tr. Pkt.	Oz.	Lb.
Dark Blue—Violet purple	\$.25	\$.95	\$9.60
Lilac Supreme—Purplish lilac25	.95	9.60
Los Angeles—Brilliant pink on salmon.....	.25	.25	9.60
Rosamond—Pure deep rose25	.95	9.60
Rose Queen—Soft rose with salmon tinge.....	.25	.95	9.60

SUPER MAJESTIC

	Tr. Pkt.	Oz.	Lb.
Rose Pink—Rich bright rose pink.....	\$.35	\$1.50	\$15.00
Deep Salmon Pink35	1.50	15.00
Lavender—Medium rosy lavender35	1.50	15.00
White—Large flowered white35	1.50	15.00

Larkspur seed may be sown directly in the open in the fall and will flower the following spring. There are two distinctly different methods used and each have a number of successful supporters. The first method is to sow the seed fairly early in the season about August 15th to September 15th. The small Larkspur seedlings will be sufficiently large enough when cold weather sets in to winter over when given a light mulch. The other method employed is to sow the seed in rows in late October or early November so that it will not germinate until early next spring. This crop of Larkspur will generally come in shortly after Delphinium Belladonna.





TAGETES SIGNATA PUMILA
(Mexican Marigold)

Small single flowered marigold with finely cut foliage. Very free flowering. Growing 6 to 10 inches in height, it may be used in combinations as well as for bedding. Will stand adverse weather conditions well.

	Tr. Pkt.	Oz.
Gnome — Golden orange flowers25	\$1.25

WINTER FLOWERING

	Tr. Pkt.	Oz.
Colorado Sunshine—This is a marigold selected as a cut flower variety. It is a luminous golden yellow with ruffled and wavy petals. Flowers are quite large. The stems are long and strong...	.40	\$2.00

MARIGOLD

GIGANTEA

A remarkable new sweet scented, robust growing extremely large flowered type, ideal for show purposes, florist use and garden decoration. It has also been tested and found good for greenhouse culture.

Orange Sunset — Deep, rich, lively orange35	\$1.75
Sunset Giants—A rich mixture of deep orange, golden orange, light yellow, lemon yellow35	1.75

CARNATION FLOWERED

	Tr. Pkt.	Oz.
Guinea Gold — Reselected strain, orange loosely finished flowers. 2-2½ feet. ¼ lb. \$6.00	.25	\$1.75
Real Gold40	2.00
Yellow Supreme ¼ lb. 6.00	.25	1.75

HARMONY TYPES

	Tr. Pkt.	Oz.
Golden Harmony — Luminous golden yellow30	\$1.75
Harmony—Deep orange center petals flanked by wide dark maroon, brown petals.....	.25	1.00
Harmony Hybrids—Dwarf attractive mixture of harmony type; crested flowers.....	.25	1.00
Spotlight—Yellow center; red guard petals25	1.00
Sunkist — Rich deep golden orange30	1.75

DWARF GIGANTEA

	Tr. Pkt.	Oz.
Cupid — Dwarf. Extra large yellow50	\$2.50
Pot O'Gold—Deep golden orange, 100% all durable.....	.40	2.50
Gypsy Jewels—A mixture of various shades of yellow and orange. Plants dwarf compact and neatly formed.....	.35	1.75
Cupid "Orange Shades" — Dwarf African type. Flowers globular in form ranging in color from light orange through to a deep orange. Odorless foliage50	2.50

AFRICAN TALL DOUBLE

Of comparative recent development, these all double strains produce practically 100% true double flowers.

	Tr. Pkt.	Oz.
Orange All Double—Rich orange	¼ lb. \$6.00	.30 \$1.75
Lemon All Double—Bright lemon yellow.....	¼ lb. 6.00	.30 1.75
Lemon Queen — Bright lemon yellow.....	¼ lb. 6.00	.30 1.75
Prince of Orange Improved	¼ lb. 6.00	.30 1.75
Golden Emblem — A distinct shade of deep golden yellow30	1.35

MISSION GIANTS
(Chrysanthemum Flowered)

	Tr. Pkt.	Oz.
Goldsmith—Golden orange.....	.35	\$2.00
Happiness—Large flowers of a cheerful golden yellow color. Profuse bloomer40	2.00
Yellowstone — Clear golden yellow40	2.00

DWARF FRENCH VARIETIES

	Tr. Pkt.	Oz.
Eldorado — Canary yellow tinted slightly deeped toward the center40	\$2.00
Fire Cross—Single, saffron, orange with brown, red center15	.65
Flash—Flowers ranging from vivid red through bronze with a few yellow, to give harmonious contrast40	2.00
Golden Ball — Extra large double golden yellow flowers. Plants are dwarf and compact25	1.00
Legion of Honor—Single golden yellow with crimson spot15	.65
Lemon Ball — Double yellow flowers25	1.00
Monarch Strain Double Mixed — Compact type. A wide range of colors.....	¼ lb. \$3.00	.20 .90
Naughty Marietta — Golden yellow single flowers with maroon blotch40	2.00
Orange Flame — Striking combination of colors. Flowers 1½ inches across. Has a single row of reddish maroon outer petals while the crest in the center is bright golden orange40	2.00
Primrose—Double sulphur yellow. Extra fine for borders.....	.40	2.00
Red Head—Large single flowers mahogany turning to bronze and gold.....	.40	2.00
Royal Scott Dwarf All Double —Rich mahogany and gold35	1.75
Scarlet Glow—Mahogany turning to orange scarlet.....	.35	1.75

MINIATURE

	Tr. Pkt.	Oz.
Butterball — Dwarf. Soft butter yellow35	\$1.75
Gold Crest — Dwarf double golden yellow30	1.75
Melody—Dwarf. Double, brilliant orange35	1.75
Spry Hybrids—Miniature flower abundantly produced in new and unusual combinations40	2.00
Spry — Yellow crested center, mahogany-red guard petals30	1.75
Yellow Pigmy — Very dwarf compact plants about 8 inches tall. Free flowering with lemon yellow blooms.....	.25	1.25

MIGNONETTE

Valuable for cutting on account of its fragrance. Seed sown in September will flower in late winter. January will bloom in May.

	Tr. Pkt.	1/4 oz.	
Giant New York Market—Selected florist strain	\$1.00	\$2.00	

MYOSOTIS (Winter Flowering)

	Tr. Pkt.	1/4 oz.	Oz.
Blue Bird	\$.35	\$.85	\$3.00

NASTURTIUM DOUBLE GLEAM

	Oz.	1/4 lb.	Lb.
Golden Gleam — Golden yellow sweet scented, long stemmed.....	\$.25	\$.70	\$2.40
Moon Gleam—Light golden cream...	.25	.70	2.40
Orange Gleam — Deep glowing golden orange25	.70	2.40
Salmon Gleam — Delicate golden salmon25	.70	2.40
Scarlet Gleam—Scarlet, sweet scented25	.70	2.40
Glorious Gleam Hybrids Finest Mixed—Wide assortment colors, sweet scented25	.70	2.40

NASTURTIUM DWARF DOUBLE

	Oz.	1/4 lb.	Lb.
Golden Globe — Golden yellow, sweet scented	\$.30	\$.80	\$2.75
Gem Mixture—Dwarf compact gem like plants, excellent color range, sweet scented30	.80	2.75

NEMESIA NANA COMPACTA

Dwarf habit. Branches freely from base. Excellent for pots and combination work.

	Tr. Pkt.	1/4 oz.
Superbissima Mixed—Large flowered bright shades	\$.25	\$.90

NEMESIA STRUMOSA GRANDIFLORA

Large flowered and long stemmed. August sowing in shallow soil will make excellent cut flowers in December and January. October sowing will produce a crop in the spring. May also be grown in large pots with a number of plants planted in each pot.

	Tr. Pkt.	1/4 oz.
Finest Mixed	\$.25	\$.90

NICOTIANA AFFINIS (Ornamental Tobacco)

Showy sweet scented annual plants, giving a continuous display of Summer flowers.

	Tr. Pkt.	Oz.
White	\$.15	\$.60
Crimson Bedder—Compact, deep crimson...	.25	2.00
Rose and Pink Shades.....	.25	1.00
Suaveolens — (Miniature White) — White; fragrant; 1 1/2 ft.	1/16 oz.	\$.85 .25

NIEREMBERGIA (Dwarf Cup Flower)

Sow seed early to have plants in flower for Decoration Day. Excellent plant for edging and general bedding. Will flower profusely during entire summer.

	Tr. Pkt.	1/32 oz.	1/16 oz.
Purple Robe—Deep violet purple.....	\$.50	\$1.75	\$3.00

PANSIES

Gloeckner SUPERFINE
"Non Plus Ultra"

This strain has large, fine flowers of superb texture and excellent markings. It is made up of fourteen separate colors so blended that it gives a perfect color balance to the mixture. It is without question a perfect strain for the commercial trade.

	Tr. Pkt.	1/8 oz.	1/4 oz.	Oz.
	\$1.00	\$1.75	\$3.50	\$12.00

	Tr. Pkt.	1/8 oz.	1/4 oz.	Oz.
Butterfly Hybrids—Mixture with a large proportion of apricot, terra cotta and rosy orchid shades in addition to regular colors	\$1.00	\$5.75	\$10.00	
Gloeckner's Exhibition Mixed75	1.25	2.25	\$ 8.00
Maple Leaf Giants — Large flowering strain...	.75	1.75	3.00	10.00
Mastodon Jumbo	1.00	3.00	5.00	16.00
Super Swiss Giants Mixed...	1.00	3.00	5.00	16.00
Swiss Giant Improved Mixed75	1.25	2.25	8.00
Tall Winter Flowering — Tall growing winter cut flower variety	1.00			

SEPARATE COLORS

	Tr. Pkt.	1/8 oz.	1/4 oz.	Oz.
Alpenglow — Cardinal shades	\$.75	\$1.75	\$3.00	\$10.00
Berna—Dark violet blue....	.75	1.75	3.00	10.00
Blue — (Ullswater) — Rich clear blue75	1.75	3.00	10.00
Coronation Gold—Canary yellow; lower petals flushed golden orange, slightly spicy scented....	.75	1.75	3.00	10.00
Luna—Sulphur yellow self...	.75	1.75	3.00	10.00
Moon Moth—Pure white...	1.00	5.00	9.00	
Pay Dirt—Yellow	1.00	5.00	9.00	
Pure White75	1.75	3.00	10.00
Rheingold — Yellow with blotch75	1.75	3.00	10.00

PEPPERS

	Tr. Pkt.
Birds Eye—Popular birdseye or holly berry type.....	\$1.00
Christmas Candle—Bears candle-like fruit.....	1.00
Long Pointed—Fine selection, long pointed type.....	1.00

PETUNIAS

HYBRIDA NANA ERECTA
(Dwarf Hybrid Class)

	Tr. Pkt.	1/32 oz.	1/16 oz.	1/8 oz.	1/4 oz.	Oz.
Admiral—Dwarf blue. Flowers ruffled at edge.....	\$.75	\$1.50	\$2.75			
Blue Bedder—Mild blue.....	.35				\$1.25	\$3.75
Celestial Rose Improved—Deep rose very compact.....	.50				2.00	6.00
Cream Star—Creamy white.....	.50				2.00	
English Violet — Violet shading to rose50				2.00	
Fire Chief—True scarlet.....	.50	1.25	2.25	\$3.50		
First Lady—Soft light pink.....	.50		1.25	2.00	3.75	
Glow—Dazzling carmine red.....	.50			2.00	3.75	
Glowing Rose—A large and intense color. Similar to Celestial Rose in growth.....	.50				2.50	
Heavenly Blue Improved—Light blue50				1.50	5.00
Howard Star Improved—Velvety purple, pure white star.....	.35				1.00	3.50
Igloo—Dwarf white50				2.00	6.00
King Henry — Rich velvet red. Dwarf and large flowered.....	.50	1.25	2.35	4.25	8.00	
Norma—Blue with white star.....	.35				1.25	
Radiance—Cerise rose with underlying salmon color. Golden yellow throat35				1.50	
Rose of Heaven Improved—Very dwarf50				1.00	3.00
Rosy Morn Improved — Very dwarf50				1.00	3.00
Snowball — Pure white, very compact25				1.25	3.50
Sunrise—(Special Strain)—Brilliant rose with scarlet flush.....	.50					
Topaz Queen—(Hybrida)—Extra dwarf. Scarlet rose.....	.50				1.75	6.00
Twinkles — Brilliant rose starred white35				.65	2.25
Velvet Ball—Deep velvety blood red75	1.35	2.50	4.50	8.25	
Violet Blue — Compact habit; rich violet blue.....	.50				1.50	4.75
Violacea—Deep velvety purple... ..	.50				1.25	4.00
Choice Mixed35				.75	2.50

GRANDIFLORA SINGLE PLAIN EDGED

	Tr. Pkt.	1/64 oz.	1/32 oz.
Blue Beauty—Distinct shade of violet blue.....	\$.75	\$1.75	\$3.00
Dazzler—Brilliant scarlet, compact	1.00	1.50	2.50
Dwarf Elks Pride—Dwarf dark velvety purple.....	1.00	1.50	2.50
Pink Glory Improved—Flame rose pink, very compact75	1.25	2.00
Snowstorm Improved—Glistening white, shaded yellow in throat75	1.75	3.00
White Cloud—Pure white, dwarf compact.....	.65	1.00	1.75

BALCONY PETUNIAS

	Tr. Pkt.	1/4 oz.	Oz.
Black Prince—Deep rich velvety crimson.....	\$.50	\$2.00	\$7.00
Blue—Rich indigo35	1.75	6.00
Crimson—Velvety35	1.50	5.00
Rose—Brilliant35	1.50	5.00
Balcony Rosy Morn—Pink with white throat.....	.50	2.00	
White—Pure white35	1.50	5.00
Mixed Colors35	1.25	4.00



Petunia
Dwarf Single Fringed
Tango



Petunia
Electra
Fire Chief



DWARF GIANTS OF CALIFORNIA

Ramona Strain—(Superdwarfs)—A dwarf sturdy growing type especially suited to pot culture. Flowers are beautifully ruffled and fringed with open, well marked throats.

Tr. Pkt.	1/64 oz.	1/32 oz.	1/16 oz.
\$1.50	\$2.50	\$4.50	\$8.00

Dwarf Continental Giants—A selected dwarf strain in an exceptionally fine mixture.

Tr. Pkt.	1/64 oz.	1/32 oz.	1/16 oz.	1/8 oz.
\$1.00	\$1.75	\$3.00	\$5.50	\$10.00

NANA COMPACTA FRINGED

	Tr. Pkt.	1/64 oz.	1/32 oz.
Innocence —(New)—Pure white flowers dwarf compact habit	\$1.00	\$3.00	\$5.00
Pink Innocence —(New)—Same type and habit as above, brilliant rose color	1.00	3.00	5.50
Rosita —(Ruffled)—Free blooming rose pink. Vigorous and free-branching. Dwarf	.80		
Little Giants Mixed —(Ruffled)—The blooms are extra large, well ruffled with good open throats and are more of the Dwarf Giants of California Type in both form and size	.75	1.25	2.00

GRANDIFLORA SINGLE LARGE FLOWERING FRINGED

	Tr. Pkt.	1/64 oz.	1/32 oz.
Dainty Lady —Very pale yellow	\$.75	\$1.75	
Miranda —Rose carmine, dark throats	.75	1.50	
Pink Triumph —Bright rose pink	.75	1.50	
Pride of Portland —Deep pink	.75	1.50	
Romany Lass —Deep crimson, deeper throat	.75	1.50	
Royal Purple —(Marine)	.75	1.50	
Theodosia Improved —Largest fringed rose, gold throat	.75	1.50	\$2.50
White Beauty	.75	2.00	
Fluffy Ruffles Mixed	.50		1.50

PETUNIA (All Double) PAN-AMERICAN STRAIN

This is an exceptionally fine strain of all Double Petunias bred and grown in the United States. It is considered one of the leading strains and has large fully double flowers in the most popular colors.

	Tr. Pkt.	1/64 oz.	1/32 oz.
Allegro —Bright deep salmon, scarlet salmon in buds. Flowers dwarf, vigorous and free blooming	\$4.00	\$14.45	\$27.45
Caprice —Brilliant rose pink, dwarf growing vigorous and compact. A very popular color	4.00	14.45	27.45
Minuet —A lovely orchid lavender. Some flowers tipped white	4.00	14.45	27.45
Nocturn —Deep midnight purple. The deepest color in Petunias	4.00	14.45	27.45
Sonata —Pure white, semi-dwarf with deeply fringed flowers	4.00	14.45	27.45
Glorious Mixture —A balanced complete mixture of all of the above varieties	3.50	12.60	21.00

GRANDIFLORA COMPACTA SINGLE FRINGED OR DWARF ERFURT

	Tr. Pkt.	1/64 oz.	1/32 oz.
Carmencita —(New)—Deep scarlet salmon	\$1.00		
Gaiety —Rose and white, dainty fringed, free flowering	.75	\$1.50	\$2.75
Lace Veil —Pure white, large flowers, free flowering	.75	1.50	2.75
Rose Charm —Clear luminous rose pink	2.00	6.50	12.00
Setting Sun —Brilliant deep rose, dark throats	.75	1.50	2.75
Snowwhite —Dwarf fringed, pure white with yellow throat	2.50	9.25	18.00
Tango —Deep rose pink, fringed	2.50	9.25	
Finest Mixed	.75	1.50	2.75

CALIFORNIA RUFFLED GIANTS (Large Throated)

	Tr. Pkt.	1/64 oz.	1/32 oz.
Coppery Red —Coppery scarlet, dark throat	\$.75	\$1.50	\$2.50
German Empress —Lilac veined, purple throat	.75	1.50	2.50
Glamour —Salmon rose, delicately veined brown in the creamy throat	.75	2.00	3.75
Prince of Wuerttemberg —(Black Prince)—Dark crimson, black throat	.75	1.50	2.50
Princess of Wuerttemberg —Rose, deep garnet throat	.75	1.50	2.50
Supreme Strain —Rose and pink shades	.75	1.50	2.75
Mixed	.75	1.50	2.50

PHLOX DRUMMONDI

Gloeckner STRAIN MIXED

This is an exceptionally dwarf strain of phlox especially adapted to pot culture for spring sales. The mixture of colors are well balanced and bright with fine individual flower heads. This strain has been well tried in many localities as we have had it for a number of years in very limited quantities.

Tr. Pkt.	1/4 oz.	1/2 oz.	Oz.
\$1.00	\$2.00	\$3.50	\$6.00

NANA COMPACTA

	Tr. Pkt.	1/4 oz.	Oz.
Apricot	.35	\$1.00	\$3.25
Chamois Rose—Deep rose	.35	1.00	3.25
Fireball—Fiery red	.35	1.00	3.25
Isabellina—Yellow	.35	1.00	3.25
Salmon Pink	.35	1.00	3.25
Snow Ball—Pure white	.35	1.00	3.25
Cuspidata Mixed	.35	1.00	3.25

PRIMULA OBCONICA SELECT STRAIN

Mohnstein Red	\$1.50	\$2.50	\$4.50
Mueller Rose	1.50	2.50	4.50
White (Snowstorm)	1.50	2.50	4.50
Blue	1.50	2.50	4.50
Wyaston Wonder—Bright crimson	1.50	2.50	4.50

PRIMULA MALACOIDES "SPRINGTIME"

SPRINGTIME is one of the finest Malacoides ever offered. This color is an attractive SALMON pink which does not fade with age. The flower stems are strong and support a profusion of good sized blooms; and unlike many other varieties of Malacoides, the foliage has good texture and is fairly resistant to rot. Thus the outstanding features of this variety are its pleasing salmon pink color, compact habit of growth and excellent keeping quality.

Seed sown in June will make good flowering plants for January. September sown seed will produce good plants for early Spring; while later sowing can be sown into small plants usable in combinations.

TRADE PACKET — \$2.00

PRIMULA MALACOIDES ERIKSSON'S STRAIN

- Glory of Riverside Imp.—True rose-pink. Strong grower.
- New Giant—Color closely resembles Glory of Riverside, but it has heavier stems and larger flowers.
- White Giant—An exceptionally strong grower and well adapted for combinations.
- Lilac Beauty—A pure soft lilac.
- Peach Blossom—Deep peach-blossom pink. Compact habit.
- Mrs. Eriksson of Riverside—A glowing rose-red. A very strong grower.
- Pure White Imp.—Flowers are smaller than White Giant but more abundant.
- Lavender New Baby Imp.—This variety contains the most beautiful shades of lavender.
- Red New Baby Imp.—An outstanding glowing red. Large flowered and heavy producer.

ORIGINATOR'S PACKETS ONLY \$1.25 EACH

GRANDIFLORA

	Tr. Pkt.	1/4 oz.	Oz.
Brilliant—Deep rose dark eye	\$.35	\$.95	\$2.75
Chamois Rose—Carmine eyed	.35	.95	2.75
Coccinea—Brilliant red	.35	.95	2.75
Isabellina—Buff yellow	.35	.95	2.75
Lilac	.35	.95	2.75
White	.35	.95	2.75
Mixed	.35	.95	2.75

GIGANTEA

A strain of Phlox Drummondii with flowers an inch and a quarter to an inch and a half in diameter. The habit is erect and uniform, growing from 9 to 12 inches tall.

	Tr. Pkt.	1/4 oz.	Oz.
Art Shades Mixed	.35	\$1.00	\$3.50
Red Glory—Brilliant red with large creamy white eye	.35	1.00	3.50
Rosy Morn—Deep rose pink with white eye	.35	1.00	3.50
Salmon Glory—Deep salmon with cream eye	.35	1.00	3.50

PRIMULA GIANT MALACOIDES

	Tr. Pkt.
Fairy Jewels—(Double)—Rose pink	\$1.50
Enchantress—Soft salmon	1.50
Snowflake—Pure white	1.00
Sweetheart—(New)—Unique bi-color	1.50
Twinkles—(Double)—Soft flesh pink	1.50
Mixed	1.00

POPPY NUDICAULE (ICELAND) POPPY GIANT FLOWERING STRAINS

	Tr. Pkt.	Oz.
Emperor—Extremely large flowered orange	\$.40	\$3.50
Empress—Very large flowering delightful salmon, rose shades	.40	3.50
El Monte—Deep tangerine, orange	.25	2.50
Fakenham—Hybrids—Fine strain	.25	2.50
Gartford Strain—Pastel colors, picotee markings	.35	4.00
Sanford's Giants—Finest mixed, vigorous growers, long stems, fine colors	.30	2.25



Primula Obconica

PORTULACA

	Tr. Pkt.	Oz.
Jewel—(Single)—Deep carmine	\$.40	\$3.50
Double—Large flowering mixed, Extra fine quality25	2.25
Single—Large flowering mixed25	2.25

**RICINUS
(CASTOR BEANS)**

Zanzibariensis Mixed—Very richly colored foliage. Enormous plant, on good soil growing 10' high.
Oz., 20c ¼ lb., 60c Per lb., \$2.00

**SALPIGLOSSIS
EMPEROR OR SUPERBISSIMA**

	Tr. Pkt.	Oz.
Finest Mixed	\$.25	\$1.00

SAPONARIA VACCARIA

January 15th sowing in shallow flats will flower for Mothers' Day

	Tr. Pkt.	Oz.
Rosea (Gloeckner Strain) — Used in same manner as "Baby's" breath; feathery pink flowers	\$.25	\$1.00

SCABIOSA

**LARGE FLOWERED TALL DOUBLE
(Old Maid's Pincushion)**

This long stemmed, free flowering annual is gaining great popularity as a summer cut flower. Every retail grower should have a good supply all summer. This flower is easily grown when seeded in April and transplanted out of doors.

	Tr. Pkt.	Oz.
Ageratum Blue—Mid blue	\$.15	\$.75
Azure Fairy—Azure blue.....	.15	.75
Blue Cockade—Deep blue15	.75
Cattleya—Rich rosy lilac, orchid tone.....	.15	.75
Cherry Red or Crimson.....	.15	.75
Fire King—Fiery scarlet.....	.15	.75
King of the Blacks—Reddish black.....	.15	.75
Loveliness—Salmon rose shades15	.75
Peach Blossom15	.75
Peace—Pure white medium dwarf.....	.25	1.75
Rosette15	.75
Shasta—Pure white, very large.....	.15	.75
Special Mixture15	.75

IMPERIAL GIANTS

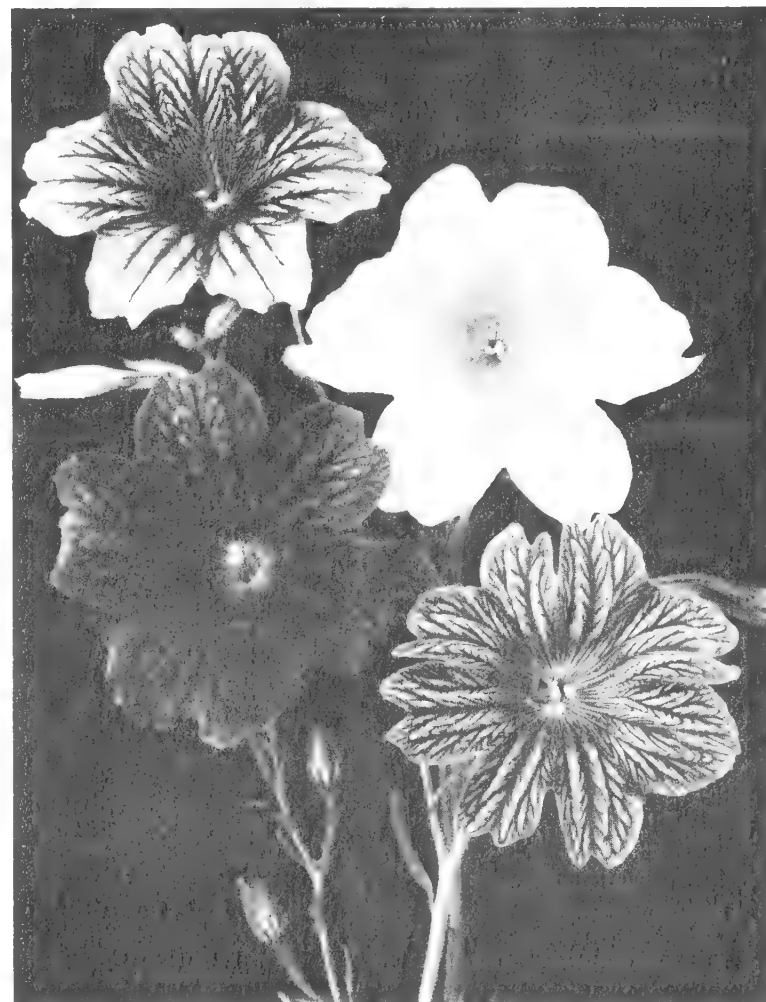
	Tr. Pkt.	Oz.
Blue Moon—Flowers composed entirely of broad, heavy, wavy petals. Rich deep lavender blue... \$.35	\$.35	\$2.25
Imperial Hybrids — (New) — Large flowers with strong stems. Mixed salmon and rose shades... .35	.35	2.25

SALVIA

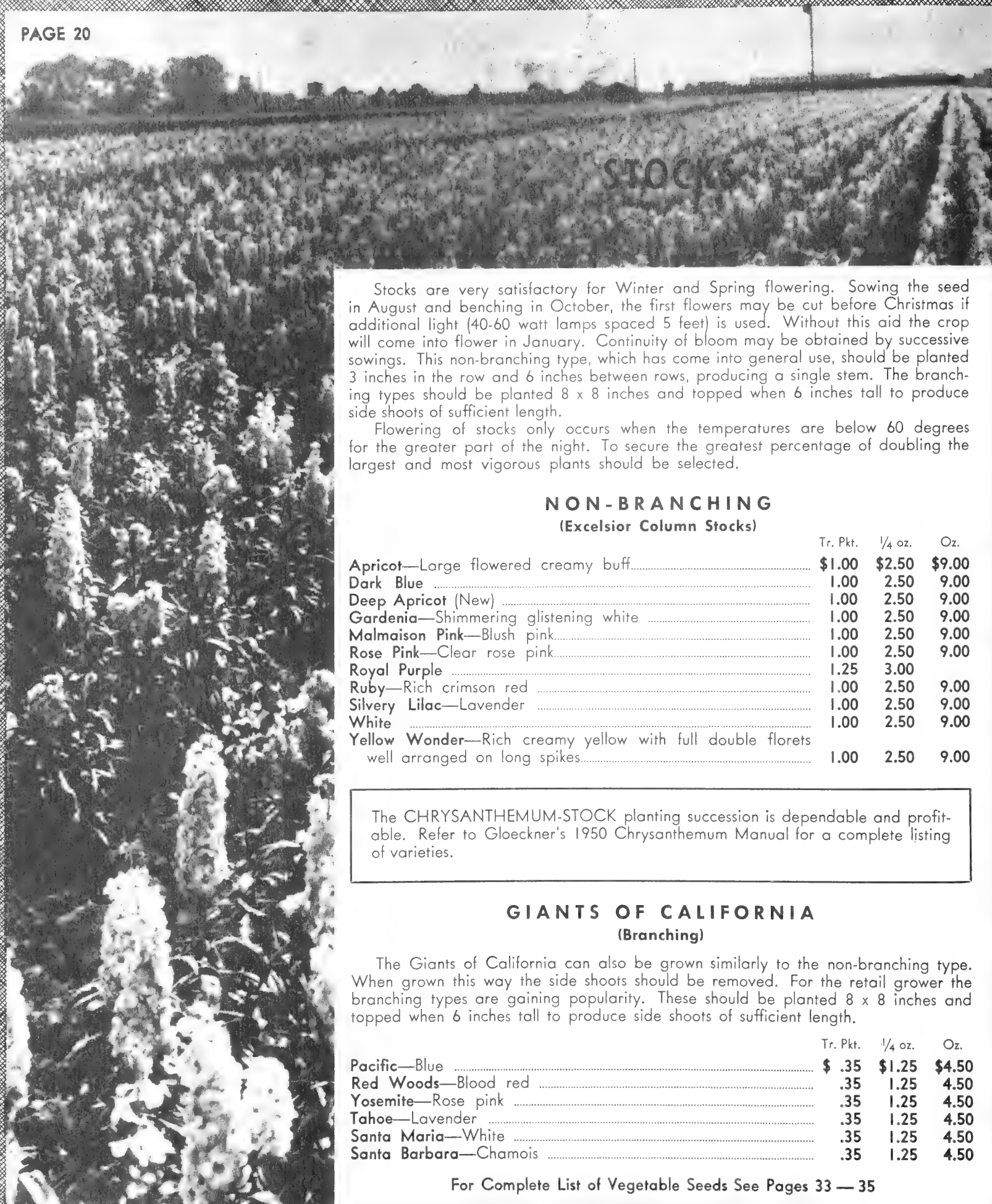
	Tr. Pkt.	¼ oz.	Oz.
America—(Globe of Fire).....	\$.50	\$1.50	\$5.00
Bonfire—Clara Bedman50	1.50	5.00
Fire Magic—Earliest and dwarfest Salvia; very fine75	2.25	8.00
Harbinger — Early flowering dwarf, bright scarlet50	1.50	5.00
Splendens—Tall growing50	1.00	3.50
Firebrand—Extra early, very dwarf scarlet75	1.75	5.25
Zurich—Dwarf very early scarlet.....	.50	1.25	4.75

MISCELLANEOUS

	Tr. Pkt.	¼ oz.	Oz.
Farinacea Blue Bedder—Deep blue... \$.50	\$.50	\$1.25	\$3.50
Farinacea Royal Blue—More intense color than Blue Bedder.....	.75	1.50	5.00



Salpiglossis



STOCKS

Stocks are very satisfactory for Winter and Spring flowering. Sowing the seed in August and benching in October, the first flowers may be cut before Christmas if additional light (40-60 watt lamps spaced 5 feet) is used. Without this aid the crop will come into flower in January. Continuity of bloom may be obtained by successive sowings. This non-branching type, which has come into general use, should be planted 3 inches in the row and 6 inches between rows, producing a single stem. The branching types should be planted 8 x 8 inches and topped when 6 inches tall to produce side shoots of sufficient length.

Flowering of stocks only occurs when the temperatures are below 60 degrees for the greater part of the night. To secure the greatest percentage of doubling the largest and most vigorous plants should be selected.

NON-BRANCHING
(Excelsior Column Stocks)

	Tr. Pkt.	1/4 oz.	Oz.
Apricot—Large flowered creamy buff.....	\$1.00	\$2.50	\$9.00
Dark Blue	1.00	2.50	9.00
Deep Apricot (New)	1.00	2.50	9.00
Gardenia—Shimmering glistening white	1.00	2.50	9.00
Malmaison Pink—Blush pink.....	1.00	2.50	9.00
Rose Pink—Clear rose pink.....	1.00	2.50	9.00
Royal Purple	1.25	3.00	
Ruby—Rich crimson red	1.00	2.50	9.00
Silvery Lilac—Lavender	1.00	2.50	9.00
White	1.00	2.50	9.00
Yellow Wonder—Rich creamy yellow with full double florets well arranged on long spikes.....	1.00	2.50	9.00

The CHRYSANTHEMUM-STOCK planting succession is dependable and profitable. Refer to Gloeckner's 1950 Chrysanthemum Manual for a complete listing of varieties.

GIANTS OF CALIFORNIA
(Branching)

The Giants of California can also be grown similarly to the non-branching type. When grown this way the side shoots should be removed. For the retail grower the branching types are gaining popularity. These should be planted 8 x 8 inches and topped when 6 inches tall to produce side shoots of sufficient length.

	Tr. Pkt.	1/4 oz.	Oz.
Pacific—Blue	\$.35	\$1.25	\$4.50
Red Woods—Blood red35	1.25	4.50
Yosemite—Rose pink35	1.25	4.50
Tahoe—Lavender35	1.25	4.50
Santa Maria—White35	1.25	4.50
Santa Barbara—Chamois35	1.25	4.50

STOCKS

**BISMARCK OR BRANCHING STOCKS
EARLY GIANT IMPERIAL**

This class continues to be popular with the florist for a cut flower. It is also excellent for bedding.

	Tr. Pkt.	1/4 oz.	Oz.
Buttercup—Rich yellow	\$.35	\$1.15	\$3.50
Chamois—Ivory, tinted old rose.....	.35	1.15	3.50
Dark Blue or Purple.....	.35	1.15	3.50
Elk's Pride—Rich deep purple.....	.35	1.15	3.50
Fiery Blood Red35	1.15	3.50
Flesh—Bright flesh35	1.15	3.50
Golden Rose—Light golden rose.....	.35	1.15	3.50
Lavender—Silvery lilac35	1.15	3.50
White35	1.15	3.50

BEAUTY OF NICE

	Tr. Pkt.	1/4 oz.	Oz.
Aurora—Golden buff	\$.35	\$.75	\$2.75
Cote D'Azure—Light lavender-blue35	.75	2.75
Flesh Pink—(Beauty of Nice).....	.35	.75	2.75
Mont Blanc—Extra early pure white.....	.35	.75	2.75
Queen Alexandra—Fine rosy lilac.....	.35	.75	2.75
Mixed35	.75	2.75

**DWARF TEN-WEEK (LARGE FLOWERING)
FOR POT PLANTS AND BEDDING**

	Tr. Pkt.	1/4 oz.	Oz.
Blood Red	\$.35	\$.65	\$2.00
Canary Yellow35	.65	2.00
Carmine Pink35	.65	2.00
Deep Rose35	.65	2.00
Lavender35	.65	2.00
Purple35	.65	2.00
White35	.65	2.00
Mixed—All colors35	.65	2.00

**SOWING DATES OF COLUMN OR NON-BRANCHING STOCK
FOR VARIOUS BLOOMING DATES**

Time of sowing	Flowering
August 1.....	January
September 1.....	February
October 1.....	March
November 1.....	April
December 1.....	May
January 1.....	Mother's Day
February 1.....	June
February 15.....	June 15



SWEET PEAS

EARLY OR WINTER FLOWERING



PINK

	Oz.	1/4 lb.	Lb.
Annie Laurie—Pure rose pink.....	\$.50	\$1.50	\$5.50
Ball Rose Improved—Cerise pink.....	.50	1.50	5.50
Jeanne Mamitsch—Cerise pink.....	.50	1.50	5.50
Josie—Brilliant rose pink, long stems.....	.50	1.50	5.50
Laddie Improved—Long stemmed giant rose, pink.....	.50	1.50	5.50
Majestic Rose—Deep brilliant rose pink.....	.50	1.50	5.50
Rose Queen Improved—Rose pink.....	.50	1.50	5.50
Shirley Temple—Delightful soft rose pink.....	.50	1.50	5.50
Zvolaneck's Salmon—Salmon cerise.....	.50	1.50	5.50

LAVENDER

Fragrance—Clear lavender.....	\$.50	\$1.50	\$5.50
Harmony—Clear lavender.....	.50	1.50	5.50
Lavanda—Clear lavender.....	.50	1.50	5.50
Memory—Clear rosy lavender.....	.50	1.50	5.50
Triumph—Lilac mauve, long stemmed.....	.50	1.50	5.50
Twilight—Lavender, with larger flowers than Harmony, which is nearest this color; vigorous grower.....	.50	1.50	5.50

BLUE

Blue Bonnet—Best clear blue.....	\$.50	\$1.50	\$5.50
Mrs. Herbert Hoover—Clear blue.....	.50	1.50	5.50
Princess Blue—Rich belladonna blue.....	.50	1.50	5.50

WHITE

Hope (Black Seeded) Pure white.....	\$.50	\$1.50	\$5.50
Snowstorm—White.....	.50	1.50	5.50
White Harmony (Black Seeded).....	.50	1.50	5.50

RED

Bright Light—Flaming scarlet.....	\$.50	\$1.50	\$5.50
Grenadier—Dazzling scarlet.....	.50	1.50	5.50
Mars—Rich deep crimson.....	.50	1.50	5.50
Pride—Pure deep even cerise.....	.50	1.50	5.50
Signal Red—A real sunproof scarlet of great brilliance.....	.50	1.50	5.50

ORANGE

Ball Orange Improved—Clear deep orange.....	\$.50	\$1.50	\$5.50
Sequoia—Golden salmon cerise, large flowers.....	.50	1.50	5.50
Treasure Island—Sparkling shades of golden orange.....	.50	1.50	5.50
Valencia—Sunproof orange.....	.50	1.50	5.50

SOWING AND FLOWERING DATES FOR Early or Winter Flowering Sweet Peas

Date to sow seed

*July.....	October—January
August.....	December—February
September.....	February—April
November.....	March—May
December.....	April—June

*Only recommended in Northern States

SWEET PEAS

LATE OR SUMMER FLOWERING

WHITE

	Oz.	1/4 lb.	Lb.
*Gigantic—White-black seeded	\$.30	\$.90	\$3.00
Snow White30	.90	3.00

PINK

*Pinkie—Large rose pink	\$.30	\$.90	\$3.00
*Crony—Shrimp pink30	.90	3.00
Floradale—Rich salmon pink on cream ground.....	.30	.90	3.00
Pink Frills—Rich cream pink.....	.30	.90	3.00

LAVENDER

King Lavender—Clear lavender.....	\$.30	\$.90	\$3.00
*Highlander—Pure lavender30	.90	3.00
Powerscourt—Large lavender30	.90	3.00

BLUE

Reflection—Clear mid blue	\$.30	\$.90	\$3.00
Flagship—Deep navy blue.....	.30	.90	3.00

RED

*Welcome—Dazzling scarlet	\$.30	\$.90	\$3.00
Rubicund—Crimson scarlet30	.90	3.00

ORANGE

*Orange Flare	\$.30	\$.90	\$3.00
Tangerine Improved—Fiery orange.....	.30	.90	3.00

*—Six Best

CUTHBERTSON

SPRING FLOWERING

This new class of Sweet Peas has taken the place of the "Spring Flowering" types previously offered. Indoors, Seed should be sown November 1st, and such planting will start to bloom in April. The Cuthbertson Class is recommended for sowing after November 1, and not earlier because they need the stronger Spring sun to bloom.

They are exceptionally successful out of doors. In the North, they flower two weeks later than the Early Flowering, and two to three weeks earlier than the Summer Flowering.

	1/2 oz.	1 oz.	1/4 lb.
Carol—Strong growing clear pink.....	\$.35	\$.65	\$1.75
Coline—Vigorous sunproof scarlet35	.65	1.75
Danny—Navy blue35	.65	1.75
David—Bright rose crimson.....	.35	.65	1.75
Evelyn—Salmon cream pink35	.65	1.75
Frank G.—Strong growing lavender.....	.35	.65	1.75
Hazel—Light blue35	.65	1.75
Janet—A pure black seeded white. Extra large.....	.35	.65	1.75
Jessie—Wavy flowers of clear satin mauve.....	.35	.65	1.75
Katie—Rose cream pink35	.65	1.75
Lois—Rose pink on white background.....	.35	.65	1.75
Marion—Extra long stemmed cream pink.....	.35	.65	1.75
Tommy—Clear medium blue35	.65	1.75



SCHIZANTHUS

Late summer sowing planted after early Chrysanthemums should flower in March. If additional light is used from October 25, blooming will start in January.

	Tr. Pkt.	1/4 oz.
Dr. Badger's Hybrids — A brightly colored large flowered strain of medium height. Suitable either for pots or cutting.....	\$.50	\$1.25
Bridal Veil —Pure white50	1.25
Brilliant Blend —Dark, bright colors, suitable for cutting. If properly pinched will make a good plant50	1.25

STATICE SUWOROW!

Russian or Rat Trail Statice

	Tr. Pkt.	Oz.
A very ornamental variety with long graceful spikes of rose pink flowers. Seed sown early outdoors will bloom in July. For the greenhouse seed started in October and spread on light shallow soil will flower from February to May. 45 degrees is best temperature	\$.25	\$1.35

THUNBERGIA — BLACK EYE SUSAN

	Tr. Pkt.	Oz.
Mixed	\$.15	\$1.00

TITHONIA — MEXICAN SUN FLOWER

(Early Flowering Strain)

	Tr. Pkt.	Oz.
Speciosa —Bright orange vermilion resembling large single African Marigolds. A good cut flower. Start early to get outdoor bloom by mid-summer.....	\$.25	\$.75

TORENIA

	Tr. Pkt.	1/16 oz.	1/8 oz.
Fournieri —Rich combination of deep blue with violet splotches on lip. Good for Combinations, Pot Plants and Bedding	\$.50	\$.75	\$1.25

SHAMROCK

	Tr. Pkt.	1/4 oz.	Oz.
True Irish	\$.20	\$.35	\$1.20

STATICE SINUATA

	Tr. Pkt.	Oz.
Kempf's Tall Improved —Deepest blue.....	\$.15	\$.45
Lavender15	.45
Market Rose —(New)30	1.00
Rosea Superba15	.45
Snow White —Greatly improved white.....	.15	.45
Yellow —(Bonduelli)15	.45
Choice Mixed15	.45



Statice Sinuata

VERBENA

Gloekner STRAIN MIXED

Here too is a fine mixture of dwarf Verbena making a fine companion for the Phlox for spring bedding plant sales. The plants are very dwarf in habit and have a splendid range of colors containing many of the eyed types through the mixture.

This is an excellent dwarf Verbena especially adapted to growing in 2 1/4" and 3" pots.

This is the first time we have been able to offer this seed in quantity.

Tr. Pkt.	1/4 oz.	1/2 oz.	Oz.
\$1.00	\$2.00	\$3.50	\$6.00

VERBENA

GIANT FLOWERING HYBRIDA — GRANDIFLORA GIGANTEA

A popular bedding plant due to its free flowering qualities. Seed must be sown early to get good plants for Spring.

	Tr. Pkt.	1/4 oz.	Oz.
Beauty of Oxford Hybrids — Rose pink to rose red shades.....	\$.50	\$.75	\$3.00
Brightness — Bright cerise scarlet; white eye50	.75	3.00
Cerise Queen—Salmon cerise50	.75	3.00
Crimson Glow—Glowing crimson.....	.50	.75	3.00
Etna—Geranium red with light yellow eye50	.75	2.50
Giant Salmon Pink — Salmon pink with white eye50	.75	2.25
Lavender Glory — Large flowered lavender with light eye.....	.50	.75	2.50
Luminosa — Fiery pink shading to salmon50	.75	2.50
Royale—Blue with creamy yellow eye50	.75	2.50
Spectrum Red—Intense bright red.....	.50	.75	2.50
White—Pure white50	.75	2.50
Mixed50	.75	2.50

HYBRIDA MAMMOTH

	Tr. Pkt.	Oz.
Dannebrog—Intense scarlet with large white eye. Very compact which makes it useful for bedding. The rich sparkling color of this showy verbena comes true to type.....	\$.50	\$2.50
Ellen Willmott		
Golden Queen—Best yellow.....	.50	2.50
May Flower—Pink50	2.50
Purple Mantle50	2.50
White50	2.50

VERBENA

	Tr. Pkt.	Oz.
Venosa Lilacina—Delicate lavender blue.....	\$.50	\$2.00



Verbena

VINCA

(PERIWINKLE)

An excellent Bedding Plant. Sow seed in August or September.

	Tr. Pkt.	1/4 oz.	Oz.
Alba Pura—Pure white.....	\$.30	\$.60	\$1.80
Kermesina—Crimson30	.60	1.80
White with Eye.....	.30	.60	1.80
Rosa—Pink30	.60	1.80



ZINNIAS

GIANT CALIFORNIA OR MAMMOTH FLOWERED

This type has rapidly gained in popularity. The plants which are three to four feet in height, are taller than the Dahlia Flowered class and have long stems, which adapt it particularly for use as a cut flower. The large flat flowers with imbricated petals give a graceful effect.

	Tr. Pkt.	1/4 oz.	1/2 oz.	1 oz.	1/4 lb.	Lb.
Brightness—Bright pink.....	\$.25	\$.40	\$.65	\$ 1.10	\$ 3.50	\$ 13.50
Cherry (Cerise) Queen — Brilliant cherry rose25	.40	.65	1.10	3.50	13.50
Crimson Queen—Rich crimson.....	.25	.40	.65	1.10	3.50	13.50
Daffodil Improved—Canary yellow..	.25	.40	.65	1.10	3.50	13.50
Enchantress—Light rose, deep rose center25	.40	.65	1.10	3.50	13.50
Golden Queen—Golden yellow.....	.25	.40	.65	1.10	3.50	13.50
Grenadier—Bright, dark red.....	.25	.40	.65	1.10	3.50	13.50
Lavender Queen—Deep rosy lavender	.25	.40	.65	1.10	3.50	13.50
Miss Willmott—Soft pink.....	.25	.40	.65	1.10	3.50	13.50
Orange King—Cadmium or orange scarlet25	.40	.65	1.10	3.50	13.50
Orange Queen—Golden orange.....	.25	.40	.65	1.10	3.50	13.50
Purity—White, best white in Zinnias	.25	.40	.65	1.10	3.50	13.50
Rose Queen—Striking bright rose.....	.25	.40	.65	1.10	3.50	13.50
Salmon Queen—Salmon rose.....	.25	.40	.65	1.10	3.50	13.50
Scarlet Queen—Glowing deep scarlet	.25	.40	.65	1.10	3.50	13.50
Violet Queen—Deep purple25	.40	.65	1.10	3.50	13.50
Finest Mixed—From named varieties	.25	.40	.65	1.10	3.50	13.50

DAHLIA FLOWERED

BODGER'S GOLD MEDAL STRAIN

These are characterized by the tendency of the center petals to incurve thus giving a deep, full appearance.

	Tr. Pkt.	1/4 oz.	1/2 oz.	1 oz.	1/4 lb.	Lb.
Canary Bird—Rich canary yellow.....	\$.25	\$.45	\$.75	\$ 1.25	\$ 4.00	\$ 14.50
Crimson Monarch — Deep crimson, flowers very large25	.45	.75	1.25	4.00	14.50
Dream—Deep lavender25	.45	.75	1.25	4.00	14.50
Eldorado—Salmon apricot25	.45	.75	1.25	4.00	14.50
Exquisite—Light rose, deep rose center	.25	.45	.75	1.25	4.00	14.50
Golden Dawn—Golden yellow.....	.25	.45	.75	1.25	4.00	14.50
Golden State—Golden orange.....	.25	.45	.75	1.25	4.00	14.50
Illumination—Deep rose self.....	.25	.45	.75	1.25	4.00	14.50
Luminosa—Bright deep pink.....	.25	.45	.75	1.25	4.00	14.50
Oriole — Orange and gold bicolor turning deep orange25	.45	.75	1.25	4.00	14.50
Polar Bear—Large pure white.....	.25	.45	.75	1.25	4.00	14.50
Purple Prince25	.45	.75	1.25	4.00	14.50
Scarlet Flame—Bright scarlet.....	.25	.45	.75	1.25	4.00	14.50
Will Rogers—Brilliant scarlet red.....	.25	.45	.75	1.25	4.00	14.50
Finest Mixed25	.45	.75	1.25	4.00	14.50

ZINNIA

FANTASY

	Tr. Pkt.	1/4 oz.	Oz.
Melody—Ochid lavender	\$.30	\$.40	\$1.10
Orange Lady—Rich shade of deep bright orange.....	.30	.40	1.10
Rosalie—Bright intense rose.....	.30	.40	1.10
Star Dust—Golden yellow30	.40	1.10
White Light—White30	.40	1.10
Wildfire—Rich dazzling scarlet30	.40	1.10
Finest Mixed—A bright colorful mixture of shaggy petaled medium sized double flowers, excellent for cutting30	.40	1.10

ELEGANS PUMILA DOUBLE

	Tr. Pkt.	Oz.	1/4 lb.
Bright Scarlet	\$.15	\$.75	\$2.00
Canary Yellow15	.75	2.00
Crimson15	.75	2.00
Flesh15	.75	2.00
Golden Orange15	.75	2.00
Pinkie—Rose pink15	.75	2.00
Salmon Rose15	.75	2.00
Spun Gold—Butter yellow.....	.15	.75	2.00
Sunshine Tints—Rich pastel shades.....	.15	.75	2.00
White15	.75	2.00
Choice Mixed15	.75	2.00

IMPROVED LILLIPUT

(Pompon or Baby Zinnias, Special Florists' Strains)

The Lilliputs are among the most popular Zinnias for cut flower use. The flowers are small, compact and symmetrical, on strong stemmed 1 1/2 ft. to 2 ft. plants.

	Tr. Pkt.	1/4 oz.	1/2 oz.	1 oz.	1/4 lb.	Lb.
Canary Gem	\$.25	\$.35	\$.60	\$1.00	\$3.25	\$10.00
Crimson25	.35	.60	1.00	3.25	10.00
Dainty Gem25	.35	.60	1.00	3.25	10.00
Golden Gem25	.35	.60	1.00	3.25	10.00
Lilac Gem25	.35	.60	1.00	3.25	10.00
Pink Gem25	.35	.60	1.00	3.25	10.00
Purple Gem25	.35	.60	1.00	3.25	10.00
Rosebud25	.35	.60	1.00	3.25	10.00
Salmon Gem25	.35	.60	1.00	3.25	10.00
Scarlet Gem25	.35	.60	1.00	3.25	10.00
White Gem25	.35	.60	1.00	3.25	10.00
Pastel Mixture25	.35	.60	1.00	3.25	10.00
Finest Mixed25	.35	.60	1.00	3.25	10.00

LILLIPUT TOM THUMB

	Tr. Pkt.	Oz.
Mixture—Plants 4" - 6", compact with well formed flowers of the Lilliput type. In red, orange, yellow, pink, rose and pastel shades.	\$.35	\$1.50

NOVELTY VARIETIES

HAAGEANA DOUBLE

(Mexican Hybrids)

The smaller flowers lend themselves to bedding and make a brilliant display.

	Tr. Pkt.	Oz.
Finest Mixed	\$.30	\$2.00

GAILLARDIA FLOWERED

(Navajo)

	Tr. Pkt.	Oz.
Finest Mixed—Bi-colors; mellow tones; fine for cutting	\$.35	\$1.35

GRACILLIMA

(Red Riding Hood)

	Tr. Pkt.	Oz.
Deep Scarlet—Miniature red flowers, 1 ft.-2 ft. free flowering.....	\$.25	\$1.50

SANVITALIA PROCUMBENS

(Double Creeping Zinnia)

	Tr. Pkt.	Oz.
Very dwarf edging plant.....	\$.30	\$1.50

SUPER CROWN O'GOLD

Each petal of the flower is overlaid with a deep golden yellow at the base, while carrying out the individual flower color at the tip.

	Tr. Pkt.	1/4 oz.	Oz.
Pastel Tints—Contains a wide range of pastel shades.....	\$.25	\$.40	\$1.25





ARCHILLEA

Ptarmica, the Pearl — Double pure white borne in dense heads..... **\$.50**

AGROSTEMMA

Coronaria Atrosanguinea—Deep blood red **\$.20 \$.60**

ALYSSUM

Saxatile Compactum—Dwarf shrubby habit with dense heads of golden-yellow flowers. Blooms from early spring through June and grows 4 to 12 inches high..... **\$.15 \$1.00**

ANCHUSA

Italica Dropmore—Flowers resemble clusters of giant Forget-me-nots and are turquoise blue. Plants attain a height of 3 to 5 feet and bloom during June and July..... **\$.25 \$.60**

Myosotidiflora — Produces large sprays of tiny blue Forget-me-not flowers above large heart shaped leaves..... **\$2.50 .50**

ANTHEMIS

Kelwayi — One of the best of the hardy Marguerites, produces yellow daisy-like flowers over a long season..... **\$.15 \$.65**

Tinctoria, Perry's Variety — An improved form, of deep golden yellow..... **.25 1.50**

ARMERIA

Formosa Hybrida—Various shades of rose pink **\$.35**

ARABIS

Alpina White—Attains a height of 6". The plant flowers very early and is of a spreading nature. The white flowers which appear from early spring to May are so numerous that no foliage is visible..... **\$.25 \$1.80**

AQUILEGIA

Coerulea—Rocky Mountain Blue Combine. Clear blue with a white corolla..... **\$.40 \$2.50**

Crimson Star Hybrids — Bicolor dark red with white **1/4 oz. \$2.75 .50**

Large Flowering Hybrids Mixed — Long spurred **.40 2.50**

Long Spurred Shades **.50 4.00**

Long Spurred Orange and Scarlet Shades..... **.50 4.00**

Mrs. Scott Elliott's Hybrids—The most popular Columbine **.50 3.50**

Longissima—Extra long spurred pale yellow 1/16 oz. **\$2.50 .50**

Rose Queen—Pink with white corolla..... **.35 2.25**

Snow Queen—The largest pure white..... **.35 3.50**

ASTER

Alpinus Mixed — Plants attain a height of about 9" suitable for rockery, or front of borders, where they make a nice display during May and June..... **\$.50 \$6.00**

ASCLEPIAS

Tuberosa—Very showy and popular native plant during July and August bearing flowers of brilliant orange scarlet..... **\$.35 \$2.75**

BELLIS

English Daisy

The English Daisy starts to produce its flowers in the early spring on low plants which grow about 3" tall. They also produce well in the fall when it is cooler.

	Tr. Pkt.	1/4 oz.
<i>Perennis Monstrosa</i> —Pink	\$.50	\$3.50
<i>Perennis Monstrosa</i> —Red50	3.50
<i>Perennis Monstrosa</i> —White50	3.50
<i>Perennis Monstrosa</i> —Mixed50	3.50

PERENNIAL SEEDS

CAMPANULA

Calycanthema—(Cup and Saucer). One of the most showy of this group. The flowers are large on stalks that attain a height of about 2 feet. Good for cutting.

	Tr. Pkt.	Oz.
Blue	\$.25	\$1.75
Lilac25	1.75
Pink25	1.75
White25	1.75
Mixed25	1.75

Persicifolia—(Peach leaf, bell flower). This variety grows from 2 to 3 feet tall and produces flowers that are more shallow than bell shaped and has foliage that is long, narrow and very graceful.

	Tr. Pkt.
Blue—Very hardy	\$.50
Alba—Very hardy50

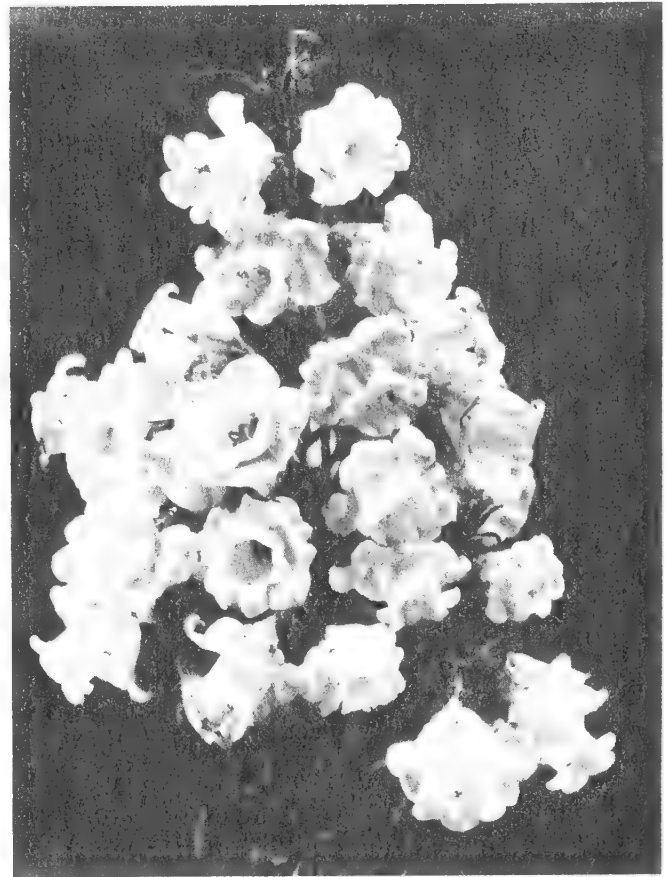
Pyramidalis—The Chimney-Bellflower is one of the tallest Campanulas attaining a height of about 5 feet. Its long stalks of flowers start blooming in August and continue for several weeks.

Alba	\$.35
Blue35

Rotundifolia—Scotch Harebell is an attractive flower producing little bells of blue during late spring and continuing over a long season. Grows 12" tall..... \$.50

CARNATION

	Tr. Pkt.	1/4 oz.
Early Vienna—Very dwarf	\$.50	\$2.75
Grenadin Mixed50	2.50



Campanula

CENTUAREA

	Tr. Pkt.
Montana—Has numerous deep blue flowers resembling Centaurea Cyanus on plants growing about 1 1/2 feet tall. Flowers early	\$.50

CHIERANTHUS (SIBERIAN WALLFLOWER)

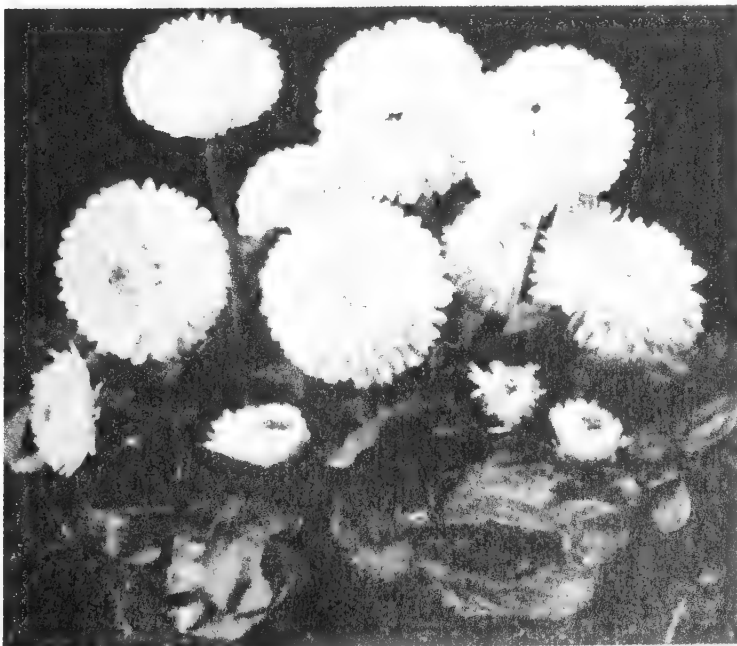
	Tr. Pkt.	Oz.
Allioni — The Siberian Wallflower, a biennial, produces its bright orange flowers on 15" spikes from May to September. To keep plant blooming, flowers must be cut.....	\$.15	\$.35

CERASTIUM

	Tr. Pkt.	Oz.
Tomentosum—Snow in the summer is a very descriptive name for this low-growing white flowered and silvery foliaged plant. Grows about 6" high. Its small white flowers are produced in June. Excellent for rockeries.....	\$.30	\$1.75

COREOPSIS

	Tr. Pkt.	Oz.
Lanceolata Grandiflora—Plants grow about 3 feet tall and produce their yellow daisy-like flowers during June. Good for cutting.....	\$.15	\$.30
Mayfield Giant — Deep golden yellow, large flowers, early25	.75
Double Sunburst — Large, golden yellow, fully double flowers25	1.00



Bellis Peppenis

PERENNIAL SEEDS

SHASTA-DAISY (CHRYSANTHEMUM)

	Tr. Pkt.	Oz.
Alaska —Most popular of all. Large pure white blooms on excellent stems. Starts blooming in June and continues for some time	\$.20	\$1.00
May Queen —(Spring Marguerite)—Medium sized flowers.....	.50	1.50
Diener's Strain Double ¹ / ₄ oz. \$3.50	.50	
Mayfield Giant —Extremely large flowers measuring three to four inches in diameter. Strong robust growth, 2 ¹ / ₂ to 3 ft. tall	.25	1.00

DIANTHUS

	Tr. Pkt.	Oz.
Plumarius Double Mixed —The grass, or Garden Pinks, are low-growing plants, which bloom early in the spring.....	\$.45	\$4.50
Deltoides Brilliant (Maiden Pink)—Deep rose, 8"50	
Sweet Wivelsfield —Excellent for cutting. Great variety of colors	.25	1.50

DIGITALIS (FOXGLOVE)

Flowers during June and July. The flowering spike grows well over three feet in height with individual tubular or bell shaped flowers, placed close on the side of the stem.

	Tr. Pkt.	Oz.
The Shirley —Giant hybrids, spotted throats.....	\$.15	\$2.00

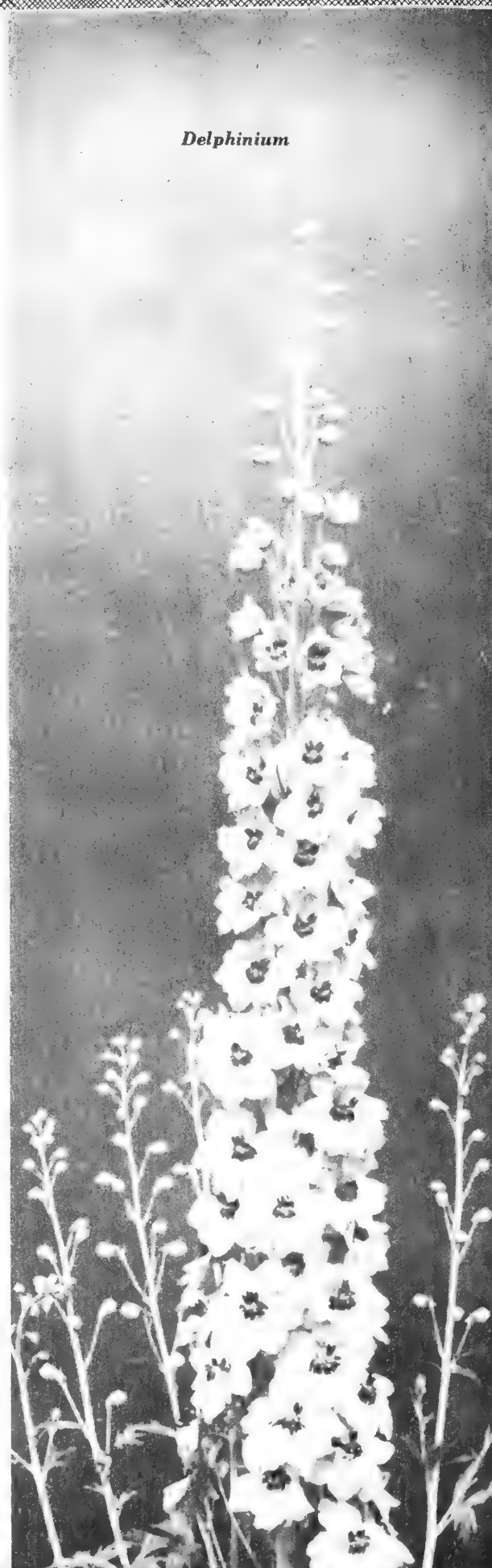
DELPHINIUM PACIFIC STRAIN (VETTERLE & REINELT)

	Tr. Pkt.	¹ / ₄ oz.	Oz.
Blue Bird Series —Clearest medium blues with white bees	\$1.25	\$4.00	\$14.00
Blue Jay Series —Clear medium to dark blue.....	1.25	4.00	14.00
Cameliard Series —Pure lavender self with white bee	1.25	4.00	14.00
Black Knight —Dark purple, heavy velvety texture	1.25	4.00	14.00
Galahad Series —Pure white	1.25	4.00	14.00
Guinevere Series —Light pink lavender self with white bee	1.25	4.00	14.00
King Arthur —Brilliant royal violet white bee.....	1.25	4.00	14.00
Lancelot Series —Lilac self with white bee.....	1.25	4.00	14.00
Percival Series —White with black bee.....	1.25	4.00	14.00
Round Table Series —This group combines all the newest color developments	1.25	4.00	14.00
Summer Skies Series —Clearest blue with white bee	1.25	4.00	14.00
Pacific Hybrids Mixed	1.25	4.00	14.00

DELPHINIUM — OTHER STRAINS

	Tr. Pkt.	Oz.
Cliveden Beauty (Belladonna Improved) — Select strain. Turquoise blue	\$.40	\$3.00
Bellamosum —Dark blue40	3.00
Blackmore & Langdon Strain — Immense flowers. Fine mixture of blue shades.....	.40	3.00
Gold Medal Hybrids —Splendid mixture.....	.25	1.75
Lamartine —Fairly deep marine blue.....	.50	4.75
Wrexham Strain —Celebrated English Hollyhock strain.....	.50	5.50

Delphinium



See Page 36 and Inside Back Cover for
 INSECTICIDES • FUNGICIDES • FERTILIZERS
 PAPER POTS • PLANT BANDS
 and CANE STAKES

PERENNIAL SEEDS

GAILLARDIA

Blanket flowers are showy and of easy culture. They begin to flower in June and continue until frost.

	Tr. Pkt.	Oz.
Burgundy —Copper scarlet self.....	\$3.30	\$2.25
Dazzler —Large rich red flowers with orange tip. Fine for cutting.....	.25	1.75
Goblin —Dwarf, compact35	2.25
Portola Hybrids —Red with golden tips. Excellent for cutting.....	.25	1.75
Tangerine —True Tangerine color. Good for cutting25	1.75

GEUM

This plant which flowers from May to October is useful for cutting and can also be used for borders and rockeries.

	Tr. Pkt.	Oz.
Mrs. Bradshaw — Brilliant scarlet. Double flowers. Good for cutting.....	\$.25	\$1.75
Lady Stratheden — Double golden yellow. Excellent for cutting25	1.75

HEUCHERA

One of the most desired of the smaller growing plants. The plants of Sanguinea are compact, bushy and grow in tufts with flower stems about 1 1/2 feet high, blooming in mid-summer.

	Tr. Pkt.	Oz.
Sanguinea —Fine for cutting..... 1/8 oz.,	\$3.00	\$.50

HOLLYHOCK — CHATERS DOUBLE

	Tr. Pkt.	Oz.
Black Gem —Maroon	\$.30	\$1.50
Chamois30	1.50
Enchantress —Deep rose30	1.50
Fire King —Scarlet30	1.50
Golden Drop —Sulphur yellow.....	.30	1.50
Newport Pink30	1.50
Salmon Rose30	1.50
Virgin Queen —White30	1.50
Mixed30	1.50

IBERIS

Low-growing plant that grows about 9 to 12" tall, and spreads out making mats which are covered with flat dense clusters of flowers from the end of April through June.

	Tr. Pkt.	Oz.
Gibraltarica —Lilac	\$.25	\$1.40
Sempervirens —White50	4.50

LAVANDULA — SWEET LAVENDER

	Tr. Pkt.	Oz.
Munstead's Strain —Well-known fragrant hardy perennial. Always in good demand	\$.35	\$3.50

LIATRIS

Long spikes 4 to 5 feet tall of rosy purple flowers during August and September.

	Tr. Pkt.	Oz.
Pycnostachya —Rosy purple. Fine for cutting.....	\$.35	\$3.00

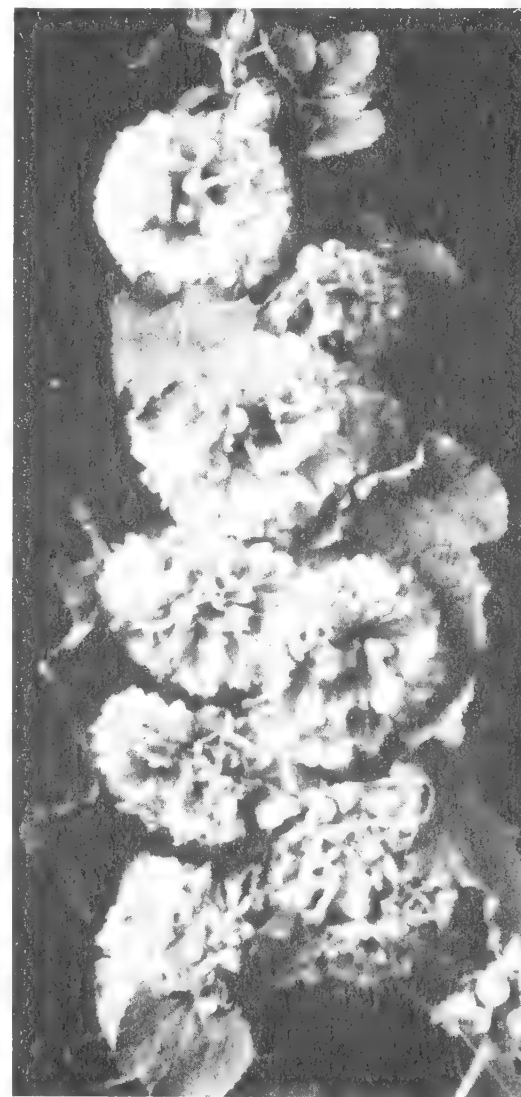
LINUM

	Tr. Pkt.	Oz.
Perenne —(Flax)—Blue. 1 1/2 ft. tall.....	\$.15	\$.50
Flavum —Yellow. 2 ft. tall.....	.25	2.75

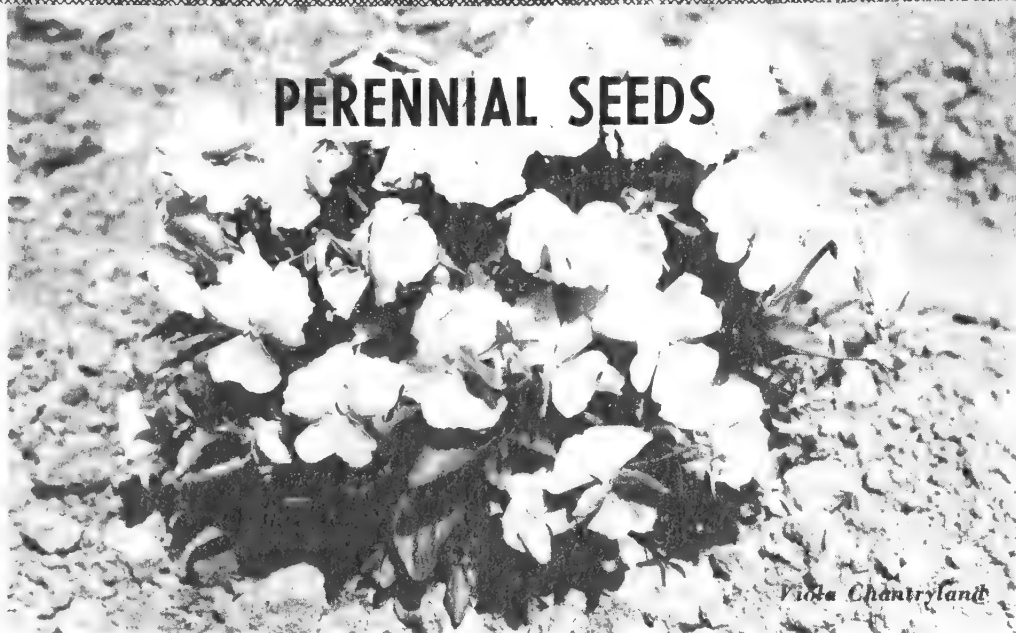
GYPSOPHILA

One of the daintiest of old-fashioned flowers. The plants are covered with small blooms all during the summer. The tall growing varieties are good for cutting, while the dwarf forms are useful for edgings and rock gardens.

	Tr. Pkt.	Oz.
Paniculta —(Single)—Hardy, graceful sprays of white flowers	\$.15	\$.50
Pacifica — Rose, 4 ft., blooms when Paniculata varieties have passed. Excellent for cutting25	2.75
Repens Rosea —Light rose 6", fine rock plant25	2.50
Repens White —6", fine rock plant.....	.25	2.50



Hollyhock



PERENNIAL SEEDS

LYCHNIS

	Tr. Pkt.	Oz.
Chalcedonica — Flowers in June. Produces several flower stems over 3 ft. tall with immense heads of vermilion scarlet flowers	\$.25	\$1.50

MYOSOTIS

	Tr. Pkt.	Oz.
Alpestris Victoria—Grows about 6" tall and is compact in growth. Produces its clear blue flowers beginning in April.....	\$.35	\$3.00
Palustris Semepiflorens — Begins blooming about May and continues until fall.....	.35	3.00

POPPY

Dwarf plants growing about 12 inches tall that bloom all summer if the flowers are kept picked.

	Tr. Pkt.	Oz.
Sunbeam Mixed—Light shades, large flowers	\$.35	\$2.25

PRIMULA

Hardy Primroses are showy plants that have small dainty flowers during April. The plants grow about 6 to 8 in. tall.

	Tr. Pkt.	Oz.
Auricula Alpine	1/4 oz. \$5.00	\$1.00
Veris Munstead's Strain.....	1/4 oz. 5.00	1.00

PYRETHRUM

These are excellent for cutting. The bright colored daisy-like flowers are produced on long stems. Plants grow about 2 to 3 ft. tall and flower in June.

	Tr. Pkt.	Oz.
Hybridum Single Mixed	\$.50	4.50
Double Mixed75	7.50

SAPONARIA

	Tr. Pkt.	Oz.
Ocoymoides—Rose	\$.30	\$2.10

SCABIOSA

Plants grow about 2 to 3 ft. tall producing their flowers on long wiry stems from June to September. Good for cutting.

	Tr. Pkt.	Oz.
Caucasica Isaac House Hybrids—Improved strain. Flowers range from lavender to dark blue. Excellent for cutting.....	\$.50	\$3.50
Caucasica Lavender—Good cut flower.....	.35	2.50

STATICE

	Tr. Pkt.	Oz.
Caspia—Lilac. Fine for table decoration.....	\$.40	\$2.50
Dumosa — Silvery gray flowers. Good cut flower30	2.50
Latifolia — Deep blue flowers. Fine for cutting25	2.00

SWEET WILLIAM

	Tr. Pkt.	Oz.
Single Mixed	\$.40	\$2.50
Double Mixed40	2.50
Dwarf Alpinus Midget Mixed—Early flowering type of Sweet William, consisting of light and dark colors, mixed. Height 4 to 6 inches. Suitable for border or rock garden planting	1/4 oz. \$1.50	.50 5.00
Scarlet Beauty—Scarlet red.....	.40	2.50

TRITOMA

	Tr. Pkt.	Oz.
Hybrids—(Red Hot Poker).....	\$.25	\$2.25

VERONICA

	Tr. Pkt.	Oz.
Spicata—Grows about 1 1/2 ft. tall and produces its bright blue flowers during June..	\$.50	\$4.00

VIOLA CORNUTA

	Tr. Pkt.	Oz.
Admiration—Large dark blue.....	\$.50	\$6.00
Chantryland—Pure apricot50	6.00
Arkwright Ruby, Hybrida—Wonderful large rounded flowers of ruby crimson with terra cotta and darker markings. Fragrant.....	.50	8.00
Blue Perfection—Large flowered fine light blue50	6.00
Lutea Splendens—Golden yellow50	4.50
Papilio—Light blue35	4.00

VEGETABLE SEEDS



BROCCOLI

	Oz.	¼ lb.
Italian Green Sprouting —(Early strain). Vigorous early type forming large compact central heads and very few laterals.....	\$.40	\$ 1.35

BRUSSELS SPROUTS

	Oz.	¼ lb.
Long Island Improved — Plant dwarf and compact	\$.50	\$ 1.50

CABBAGE

	Oz.	¼ lb.	Lb.
Copenhagen Market: Early, round headed variety. Excellent quality... \$.50	\$ 1.50	\$ 4.50	
Danish Ball Head: Most popular late variety. Good keeper.....	.50	1.50	4.50
Early Jersey Wakefield: The earliest oblong variety. Sure header, small heads, suitable for home gardens	.40	1.25	3.75
Glory of Enkhuiizen: Heads large and globular, stem medium short.....	.50	1.50	4.75
Golden Acre: The earliest resistant cabbage developed. A SOLID ROUND HEAD OF MEDIUM SIZE	.50	1.50	4.50

	Oz.	¼ lb.	Lb.
Jersey Queen: In type and earliness about the same as Jersey Wakefield	\$.45	\$ 1.40	\$ 4.25
Wisconsin All Sason: A main crop yellow resistant cabbage. Round head, good quality.....	.50	1.50	4.75
Mammoth Red Rock: Best red variety. Good keeper, round head....	.50	1.50	4.50
Marion Market (Resistant): A resistant Copenhagen Market matures a trifle later.....	.50	1.50	4.75
Premium (Late) Flat Dutch: Large late variety. Very good quality, excellent keeper40	1.30	4.00
Savoy, Chieftain: Earlier than standard market varieties of Savoy. Plant medium short stemmed.....	.50	1.50	4.50

CAULIFLOWER

	¼ oz.	Oz.
Early Snowball "A" (Dwarf Erfurt) —One of the most satisfactory early strains of Snowball	\$ 1.00	\$ 2.50
Snowdrift — Heads large firm and snow white	1.00	2.50

VEGETABLE SEEDS

CELERY

	Oz.	1/4 lb.
Golden Yellow Self Blanching — Standard early market variety.....	\$.90	\$3.00
Golden Plume — Early, non-bolting variety. Fine flavor, solid and tender.....	.90	3.00
Emperor —Dwarf growing, very brittle and of excellent flavor. Good winter keeper.....	.80	2.50
Giant Pascal —Stems thick, of fine quality, rich nutty flavor. An excellent variety.....	.70	2.35

EGG PLANT

	Oz.	1/4 lb.	Lb.
Black Beauty —An extra early, large variety with few seeds.....	\$.60	\$2.00	\$6.00
Florida High Bush —Plants of strong upright growth, producing fruit well above the ground.....	.60	2.00	6.00
Improved New York Purple —Popular home and market garden variety.....	.75	2.25	7.50

LETTUCE

	Oz.	1/4 lb.	Lb.
Black Seeded Simpson — Ideal mid summer leaf variety, will withstand heat and drought.....	\$.20	\$.65	\$2.00
Grand Rapids Forcing —The leading greenhouse forcing leaf variety, but may be grown successfully outdoors.....	.25	.95	2.75
Big Boston —A large headed variety for mid-summer and fall use.....	.25	.75	2.25
Imperial No. 44 —Has very long well folded leaves and produces hard, well formed heads.....	.35	1.15	3.50
New York 12 —An early sure heading strain adapted to warmer weather. Forms flat heads with light green leaves.....	.35	1.15	3.50

PARSLEY

	Oz.	1/4 lb.
Extra Triple Curled (Moss Curled) — Plants compact leaves dark and finely cut.....	\$.20	\$.50

PEPPER

	Oz.	1/4 lb.
Bull Nose or Large Bell (Hot) —Medium size fruits, deep green when immature, scarlet when ripe.....	\$.70	\$2.50
California Wonder (Sweet) — Much used, particularly by market growers. Large green fruits practically as early as Ruby King.....	.70	2.50

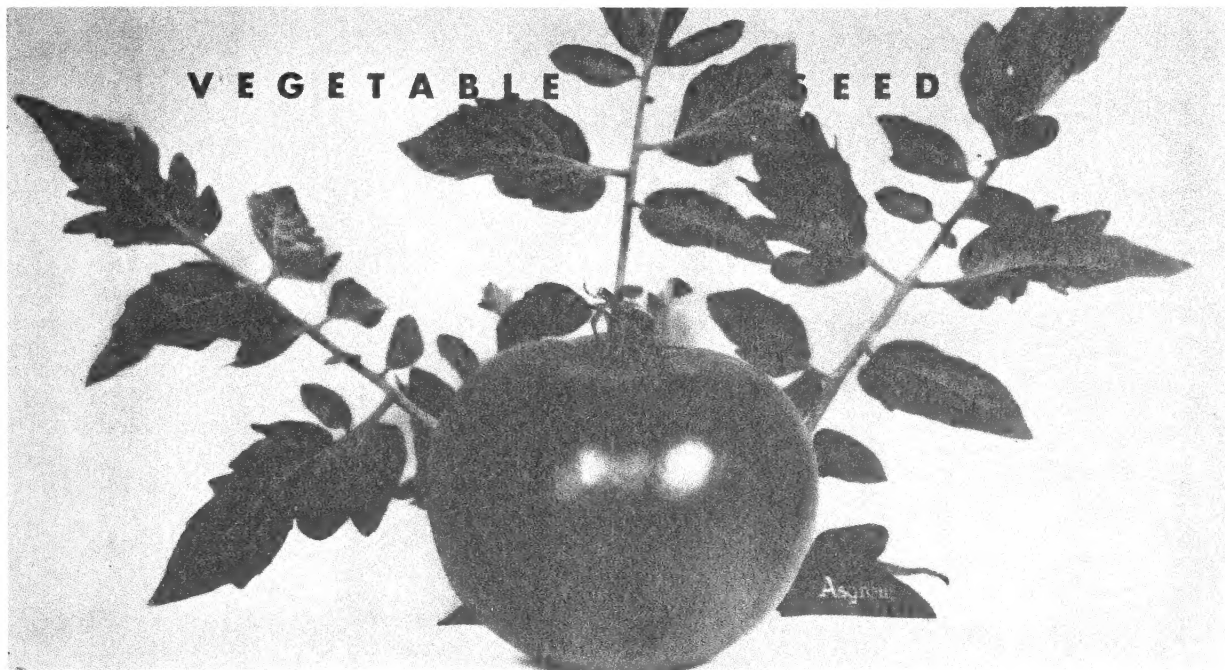
	Oz.	1/4 lb.
Cayenne Long Red (Hot) — A leading sort for use in pickles, for canning and for drying. Fruits long, tapered, and very pungent.....	\$.60	\$2.00
Chinese Giant (Sweet) — The largest sweet pepper. Roundish, blunt, mild and sweet throughout. Deep green changing to deep scarlet.....	.60	2.00
Crimson Giant (Sweet) —Very mild, popular home and garden variety.....	.60	2.00
Harris Early Giant (Sweet) — The best very early pepper for home and market gardens. Large fruits, slightly tapered. Deep green changing to bright red.....	.65	2.25
Hungarian Yellow Wax (Hot) —Yellow very early. Fruits long, tapered. Waxy light yellow.....	.75	2.50
Pimento (Sweet) —Standard variety for home and market garden. Fruits heart-shaped and very smooth.....	.45	1.50
Ruby King (Sweet) — A favorite for home and market garden. Fruits large and slightly tapered. Bright red.....	.65	2.25
Sweet Yellow (Sweet) —Skin golden yellow, flesh thick and bright yellow.....	.65	2.25
World Beater (Sweet) —An early sort. Fruits large, oblong; flesh thick and sweet. Bright red.....	.60	2.00

ONION

	Oz.	1/4 lb.
Prizetaker — Large, globular, yellow. Flesh coarse and mild.....	\$.70	\$2.30
White Sweet Spanish — White with clear glistening skin. Globe-shaped.....	.70	2.30
Yellow Sweet Spanish —Globe-shaped, keeps extra well.....	.70	2.30

RADISH

	Oz.	1/4 lb.	Lb.
Improved Scarlet Globe —Very early sort, valuable for out of door culture and for forcing. Uniform, rich bright, scarlet, flesh white.....	\$.15	\$.45	\$1.50
Scarlet Turnip, White Tip —Popular variety, small top. Root bright scarlet with white area about the tip.....	.15	.40	1.25
White Icicle —The best early white variety. Roots long, tapered, very white throughout.....	.20	.40	1.30



VEGETABLE SEED

TOMATO

	Oz.	1/4 lb.	Lb.		Oz.	1/4 lb.	Lb.
Bonny Best (73 days) — A general purpose tomato. Fruits evenly colored scarlet-red, medium large.....	\$.60	\$1.80	\$6.00	Master Marglobe (75-78 days) — HIGHLY resistant and heavily productive	\$.80	\$2.75	\$8.00
Break O'Day (73-75 days) — Early wilt resistant, globe-shaped sort. Fruits large, scarlet of good quality	.65	2.00	6.50	Michigan State Forcing —Developed at Michigan State College. Very productive under restricted light conditions. Fruits deep scarlet, globe shaped, are borne in clusters of five to eleven.....	1.50		
Chalk's Early Jewel (75 days)—Very thrifty, heavy producer. Fruits scarlet-red, large and firm.....	.50	1.75	5.00	Oxheart — Heart shaped. Pink fruit, mild flavor	1.10	3.70	11.00
Dwarf Stone (82 days) — Strictly dwarf and tree-like, require no training. Fruits bright red, medium sized65	2.00	6.50	Ponderosa (85 days) — One of the best for home use. Fruits purplish-pink, very fleshy with seeds, of very mild flavor85	2.75	8.50
Earliana (64-66 days) — Particularly valuable for home garden and early market. Fruit medium size flattened75	2.50	7.00	Pritchard (Scarlet Topper)—Wilt resistant, heavily productive. Fruits large, globular, scarlet and well colored about the stem.....	.65	2.20	6.50
Globe "A" (Forcing) —Pink fruits a little larger than regular Globe. Ships well	3.00			Rutgers (78 days) — Highly recommended for second early maturing variety for canning and tomato juice. Fruits similar in shape to Marglobe. Uniformly colored flesh	.65	2.20	6.50
Globe: (Livingston's) (81 days) — Heavy producer. Fruits purplish pink, large globe shape, scarlet red65	2.00	6.50	Stokesdale (70-73 days)—Early suitable for shipping. Fruits uniform, deep scarlet, globe shape.....	.65	2.20	6.50
Golden Queen —Large yellow fruit, mild flavor70	2.35	7.00	Stone Improved (85 days)—Very solid fruit scarlet red, flat shape.....	.65	2.20	6.50
Greater Baltimore (83 days)—Similar to Stone and particularly valuable for canning50	1.75	5.50	Valiant —Early red.....	.90	3.00	9.00
John Baer (73 days)—Very similar in every respect to Bonny Best.....	.60	2.00	6.25				
Marglobe (75-78 days) — Resistant to Fusarium wilt. Fruits uniform deep scarlet, globe shape and of distinct quality60	1.80	6.00				

The number of days indicates the length of time from date of planting in the open to time of ripening.

SUNDRIES

GREEN PAPER POTS

Sold in units of 1000 only

	Per 1000
2"	\$10.30
2 1/4"	10.40
2 1/2"	11.00
3"	12.25
3 1/2"	16.10
4"	18.65
5"	24.80
6"	31.50

PLANT BANDS (WOOD)

	Per 1000
1 3/4 x 1 3/4 x 2 1/2"	\$4.10
2 x 2 x 2 1/2"	4.50
2 1/2 x 2 1/2 x 3"	5.00
3 x 3 x 3"	5.30
3 x 3 x 4"	6.00
4 x 4 x 4"	7.00

RED PAPER POTS

Sold in units of 1000 only

	Per 1000
2"	\$ 6.85
2 1/4"	6.85
2 1/2"	6.90
3"	7.30
3 1/2"	9.65
4"	11.55
5"	14.15
6"	17.65

PRESERVATIVES CUPRINOL GREEN

This wood preservative can be used to protect your frames, seed boxes, benches, flats and stakes as well as the wood portion of your greenhouse.

1 Gal. Can	\$3.90
5 Gal. Can, per gal.	3.65
50 Gal. Drums, per gal.	3.50

CUPRINOL FOR FLORISTS

5 Gal., per gal.	\$2.35
50 Gals., per gal.	2.20

PALM TUBS

Green, bound with metal bands with two holes in bottom.

	Per 100
7" wide x 7" deep	\$ 90.00
8" wide x 8" deep	100.00
9" wide x 9" deep	115.00
10" wide x 9" deep	120.00
11" wide x 10" deep	160.00
12" wide x 11" deep	230.00
14" wide x 13" deep	300.00
16" wide x 14" deep	

ELECTRA 5-10-3

The only fertilizer made especially for florists. Electra is an ORGANIC fertilizer, and will bring about complete plant development without saltness. Improvements in its ingredients are made from time to time and you will find Electra better through an important refinement.

\$6.75

CANE STAKES

Bamboo, dyed green, of pencil thickness. Packed 2000 per bale.

12 inch to 5 feet
At Market Prices

VITA-BANDS—10

Sold in units of 1000 only

	Per 1000
1 3/4 x 1 3/4 x 2 1/2"	\$3.35
2 x 2 x 2 1/2"	3.65
2 x 2 x 3"	4.15
2 1/2 x 2 1/2 x 3"	4.75
3 x 3 x 3"	5.65
4 x 4 x 3"	7.35

HYACINTH STAKES

Split bamboo, dyed green in bales of 1000 sticks.

12, 15, 18 and 24 inch
At Market Prices

VITA-BANDS—40

Sold in units of 1000 only

	Per 1000
1 3/4 x 1 3/4 x 2 1/2"	\$4.90
2 x 2 x 2 1/2"	5.40
2 x 2 x 3"	5.90
2 1/2 x 2 1/2 x 3"	6.95
3 x 3 x 3"	8.10

HORMODIN Root Growing Chemical

3/4 oz.	\$.50
1 lb. tin	3.00

TWISTEMS

The green paper covered wire plant tie.

	1000	5000
8 inch	\$1.75	\$ 7.95
12 inch	2.55	11.90
16 inch	3.45	15.85

ROOTONE

A plant hormone powder for rooting cuttings and increasing root growth.

2 oz.	\$1.00
Lb.	5.00

INSECTICIDES

INSECTICIDES, FUNGICIDES AND FUMIGANTS

Benzene Hexachloride Spray	pt. \$5.00 — qt. \$8.00 — gal. \$ 25.00	Loro	gal. \$ 12.00
Calcium Cyanide G. Fumigant	5 lbs. \$3.75 — 25 lbs. 12.50	Nicofume Liquid	gal. 12.55
Deerate 50-W (DDT)	4 lbs. \$2.25 — 25 lbs. 11.25	Nicofume Pressure Fumigators	
Detex	gal. \$10.00 — 5 gals. 45.00	1/2-lb. cans (12 cans)	4.80
Dow's Mike Sulphur Dust	10 lbs. 1.50	1-lb. cans (12 cans)	8.35
Dow Spray No. 17	lb. 3.00	NNOR	gal. 10.00
D.N. Sulphur Dust No. 10	10 lbs. 2.50	Optox (10% DDT)	gal. 12.00
D.N. Sulphur Dust No. 12	10 lbs. 4.00	Parathion Bombs	4-lb. bomb 10.00 (2 bombs minimum order)
DuPont Spreader Sticker	gal. \$6.25 — 5 gals. 30.00	Parathion Dust 2%	25 lbs. \$10.00 — 50 lbs. 18.00
Evergreen	gal. 12.60	Parathion Spray 15% Wettable	4-lb. bag 7.00
Fermate	3 lbs. \$2.70 — 25 lbs. 21.25	Parzate	per lb. 1.00
Fulex Soil Treatment	per pt. 7.50	Proliferol (Red Leaf)	2-oz. jar \$1.00 — 1-lb. jar 4.50
	per case, 4 pts. 28.00	Proliferol (Green Leaf)	8 capsule vial 1.00 50 capsule vial 4.50
	per case, 8 pts. 52.00	P-40	25 lbs. \$ 4.75 — 50 lbs. 9.00 100 lbs. \$17.00 — 1000 lbs. 160.00
Fulex Soil Treatment B	per pt. 6.00	Sodium Selenate	lb. 4.00
	per case, 4 pts. 22.00	Tepp Bombs	4-lb. bomb 6.25
	per case, 8 pts. 40.00	Tobacco Dust	100 lbs. \$3.50 — ton 65.00
Fume-Tobac	25-lb. drum \$4.50 — 50-lb. drum 9.00 100-lb. drum 16.50	Tonacide	50 lbs. \$9.00 — 100 lbs. 16.00
Isotox 15	(supplied in 50 lb. bags only) 50 lbs. 20.00	Vapotone	gal. 11.90
Laryacide	(6 lbs. 1/2 case) per lb. 1.35	Volck	gal. \$2.25 — 5 gals. 8.50
	(12 lbs. 1 case) per lb. 1.25	Yamtox with DDT	gal. 12.00
	(25 lb. lots) per lb. 1.00	Yamtox with B.H.C.	gal. 18.00
	(50 lb. lots) per lb. .90	Zerlate	3 lbs. \$2.70 — 25 lbs. 21.25
	(100 lb. lots) per lb. .82		

*We Can Supply You With Any Insecticide or Fungicide
Not Listed Above*

